

# 5<sup>th</sup> FAI World Cup of Indoor Skydiving 2024



BID FROM

**Associação de Paraquedismo Interior de Macau**  
**Macau Indoor Skydiving Association**



<b>1. EVENT ORGANISERS</b>	<b>4</b>
1.1 FAI Member / NAC	4
1.2 Organising Committee	4
1.3 Application Fee	5
1.4 Commercial Rights	5
1.5 Distribution or Revenue	5
<b>2. EVENT DETAILS</b>	<b>5</b>
2.1 Full Name of Event	5
2.2 Disciplines to be Contested	6
2.3 Event Dates	6
2.4 Location of Event	7
2.5 Access to location	8
2.6 Weather Conditions	9
2.7 Airspace Restrictions	10
2.8 Landowner Restrictions	10
2.9 Details of Event Insurance	10
2.10 Details of Insurance	10
2.11 Budget and Pricing	10
2.12 Facilities	12
2.13 Wind Tunnel	14
2.14 Pre-event Training	15
2.15 Accommodation	16
2.16 Local Transportation Provided	17
2.17 Outline of Media Plan	17
2.18 Accommodation Details for FAI/IPC Officials	19
2.19 Details of all Judging and Scoring Equipment to be provided	19
2.20 Public Address System	19
2.21 Safety	19
2.22 Proposals for Event Officials	20
2.23 Details of On-Site Communications	20
2.24 National, State, Provincial, Local, Organizer Legislation / Rules	20
2.25 Visa Requirements	20
2.26 Medals	21
2.27 Anti-Doping Requirements	21
2.28 Date of Post Event Report	22
2.29 Additional Information	22
<b>3. ANNEX</b>	<b>22</b>
Annex A :Application Fee — Proof of Payment	22
Annex B: GoAirborne Facility Floor Plan & Details	23
Annex C: GoAirborne Facility Photos	25

Annex D: Hotel Locations and Room Photos	30
Annex E: Accommodation Details for FAI / IPC Officials — Lisboaeta Hotel	32

# 1. EVENT ORGANISERS

## **GoAirborne Indoor Skydiving Macau**

Lisboeta Macau Resort, Rua Da Patinagem, Cotai, Macau

### **Lawrence Koh**

+65 97537701

[lawrence.koh@goairborne.com](mailto:lawrence.koh@goairborne.com)

## 1.1 FAI Member / NAC

Associação de Para--quedismo Interior de Macau  
Macau Indoor Skydiving Association

Rua Francisco H. Fernandes  
Hotline Center, 17-Andar-M  
Macao

Application in progress.

## 1.2 Organising Committee

### **Lawrence Koh**

Director, GoAirborne Indoor Skydiving Macau

[lawrence.koh@goairborne.com](mailto:lawrence.koh@goairborne.com)

### **Angus Ho**

General Manager,

GoAirborne Indoor Skydiving Macau

[angus.ho@goairborne.com](mailto:angus.ho@goairborne.com)

### **Vicky Tang**

Marketing Manager,

GoAirborne Indoor Skydiving Macau

[vicky.tang@goairborne.com](mailto:vicky.tang@goairborne.com)

The organising team, led by Lawrence Koh, organized the 2012 Indoor Skydiving World Championships in Singapore, collaborating with ESPN to give maximum exposure of the sport to a wider audience. [Watch the event coverage here.](#)

<https://www.youtube.com/playlist?list=PLzlx1APhnMFT5aIIIQteYiJ-YWsHPDh5w>

## 1.3 Application Fee

Please refer to Annex A for proof of payment.

### Banking Information

Account Name: GOAIRBORNE INDOOR SKYDIVING (MACAU) COMPANY LIMITED  
Account Address: COTAI, junto à Rotunda da Central Térmica de Coloane,  
piso 01 do Hotel do “Lisboeta”, Macau. Unit No. R99  
Account No.: 0119100200008968837  
SWIFT Code: ICBKMOMX  
Bank Name: INDUSTRIAL AND COMMERCIAL BANK OF CHINA (MACAU) LIMITED  
Bank Address: MACAU LANDMARK FLOOR 18 555 AVENIDA DA AMIZADE MACAU

## 1.4 Commercial Rights

As per FAI rulings.

## 1.5 Distribution or Revenue

GoAirborne Indoor Skydiving Macau is the first-ever indoor skydiving centre in Macau, serving guests from Macau, Hong Kong and the Greater Bay Area. Featuring an international competition standard wind tunnel, GoAirborne is founded on the purpose of sharing the experience of indoor skydiving with everyone.

The centre is designed to offer an immersive sensorial experience, outfitted with state-of-the-art technology and the ability to host large scale indoor skydiving competitions in all major disciplines for proflyers and athletes.

The management and staff of GoAirborne Indoor Skydiving Macau are passionate and experienced, actively encouraging the sport, sponsors teams and athletes in their training as well as organizing national and international competitions.

# 2. EVENT DETAILS

## 2.1 Full Name of Event

5th FAI World Cup of Indoor Skydiving 2024

## **2.2 Disciplines to be Contested**

### **1. Formation Skydiving Events**

- a. 4-way FS
- b. 4-way VFS (Open, Female, Junior)

### **2. Artistic Skydiving Events**

- a. Dynamic 4-way (Open, Junior)
- b. Dynamic 2-way (Open, Junior)
- c. Solo Freestyle (Open, Junior)

## **2.3 Event Dates**

GoAirborne Indoor Skydiving Macau proposes to hold the event during March-April of 2024, coinciding with the Easter holidays.

This will be the first FAI World Cup of Indoor Skydiving to be held at the Lisboeta Macau Resort, a fully competition standard skydiving wind tunnel, measuring 15 meters (49 ft) tall by 4.3 meters (14 ft) wide.

## Complete Program / Competition Dates & Schedule

Date	Time	Agenda
April 10, 2024 (Wednesday)	-	Official arrival day
April 11, 2024 (Thursday)	09:00	Official practice day(s)
	18:00	Opening ceremony
April 12, 2024 (Friday)	08:00	Competition
April 13, 2024 (Saturday)	08:00	Competition
April 14, 2024 (Sunday)	16:00	Competition ends (last take off)
	19:00	Award ceremony
	20:00	Banquet & closing ceremonies
April 15, 2024 (Monday)	-	Departure day

## 2.4 Location of Event

GoAirborne Indoor Skydiving Macau is located within the Lisboaeta Macau Resort and Entertainment Complex in Cotai, Macau. The resort offers 820 guest rooms with three unique themes – Lisboaeta, LINE FRIENDS presents CASA DE AMIGO and Maison L'Occitane.

Lisboeta Macau includes attractions such as Night Market @ Lisboaeta and a shopping mall which features a host of dining facilities, paired with new entertainment attractions such as GoAirborne, ZIPCITY Macau, Emperor Cinemas, Guia Electric Karting and an outdoor event space. Located approximately 3 km from the Macau International Airport, Lisboaeta Macau is suitable to receive competitors and international guests with ease.

This prime locale in Cotai, Macau is equipped to deliver an all-encompassing experience to all guests, and will additionally support the long term development of Macau tourism.

### **Address: GoAirborne Indoor Skydiving Macau**

R99, 1st floor, Shopping Mall,  
Lisboeta Macau Resort,  
Rua Da Patinagem, Cotai, Macau  
[www.goairborne.com](http://www.goairborne.com)

## **2.5 Access to location**

### **1. By Air**

#### **a. From Macau International Airport**

- i. By Taxi
  - Walk to the taxi station located at ground floor level and hire a taxi to Lisboeta Macau
  - Total Estimated Time: 15 min
- ii. By Macau Railway Station
  - Take a train from Aeroporto Station and alight at Jogos da Ásia Oriental Station
  - From there, walk 10 min (850m) to Lisboeta Macau
  - Total Estimated Time: 25 min

### **2. By Sea**

#### **a. From Outer Harbour Ferry Terminal**

- i. By Bus
  - Take bus number AP1 from the Ferry Terminal Station and alight at Wai Long/ Macau University of Science & Technology Station
  - From there, walk 24 min (2km) to Lisboeta Macau
  - Total Estimated Time: 1 hour
- ii. By Taxi
  - Walk to the taxi station and hire a taxi to Lisboeta Macau
  - Total Estimated Time: 20 mins

#### **b. From Taipa Ferry Terminal**

- i. By Bus
  - Take bus number 26 from the Terminal Maritimo Provisorio da Taipa Station and alight at Roundabout of Flor De Lotus-1 Station
  - From there, walk 15 min (1.3km) to Lisboeta Macau
  - Total Estimated Time: 1 hour
- ii. By Taxi
  - Walk to the taxi station and hire a taxi to Lisboeta Macau
  - Total Estimated Time: 15 mins
- iii. By Macau Railway Station
  - Take a train from Aeroporto Station and alight at Jogos da Ásia Oriental Station
  - From there, walk 10 min (850m) to Lisboeta Macau
  - Total Estimated Time: 25 min

### **3. By Road**

#### **a. From Border Gate**



- i. By Bus
    - Take bus number 25X from the General Union of Community Association Station and alight at Nova Cidade De Cotai Station
    - From there, walk 15 min (1.3km) to Lisboeta Macau
    - Total Estimated Time: 1 hour and 20 minutes
  - ii. By Taxi
    - Walk to the taxi station and hire a taxi to Lisboeta Macau
    - Total Estimated Time: 25 mins
- b. From Qingmao Port**
- i. By Bus
    - Take bus number 25X from the General Union of Community Association Station and alight at Nova Cidade De Cotai Station
    - From there, walk 15 min (1.3km) to Lisboeta Macau
    - Total Estimated Time: 1 hour and 20 minutes
  - ii. By Taxi
    - Walk to the taxi station and hire a taxi to Lisboeta Macau
    - Total Estimated Time: 40 mins
- c. From Cross Border Industrial Area Frontier Building**
- i. By Bus
    - Take bus number 25X from the General Union of Community Association Station and alight at Nova Cidade De Cotai-2 Station
    - From there, walk 15 min (1.2km) to Lisboeta Macau
    - Total Estimated Time: 1 hour and 30 minutes
  - ii. By Taxi
    - Walk to the taxi station and hire a taxi to Lisboeta Macau
    - Total Estimated Time: 45 mins
- d. From Hong Kong Zhuhai Macau Bridge Port**
- i. By Taxi
    - Walk to the taxi station and hire a taxi to Lisboeta Macau
    - Total Estimated Time: 20 mins

<https://www.lisboetamacau.com/en/getting-here/>

<https://goairborne.com/mo/contact-us>

## **2.6 Weather Conditions**

Considerations regarding weather conditions are not applicable as the event will be held indoors.

## **2.7 Airspace Restrictions**

Considerations regarding airspace restrictions are not applicable as the event will be held indoors.

## **2.8 Landowner Restrictions**

There are no landowner or third party restrictions that apply for GoAirborne Indoor Skydiving Macau and the GoAirborne wind tunnel operation as our facility is in cooperation with the Lisboeta Macau Resort, developed by Macau-based Macau Theme Park and Resorts Limited.

Any future matters that may arise with respect to the event will be discussed and resolved directly between the parties stated above.

## **2.9 Details of Event Insurance**

GoAirborne Indoor Skydiving Macau is covered under its 2,500,000 Euro comprehensive public liability insurance and will have this insurance cover for the event.

## **2.10 Details of Insurance**

GoAirborne Indoor Skydiving Macau does not require tunnel flyers to hold third party liability insurance.

During the registration process all flyers are asked to sign a waiver and risk acceptance statement. Each participant will be responsible for getting their own travel medical insurance.

## **2.11 Budget and Pricing**

The budget and pricing for this event has been created utilizing the current IPC rules, in consensus with the organizers' responsibilities concerning the "Indoor Skydiving Competition Bid Guide 2017".

### **Competitor Entry Fee**

This fee is inclusive of:

- Opening ceremony
- Competition cost (including potential re-flights)
- Shuttle bus service between GoAirborne Indoor Skydiving Macau and recommended hotels throughout the competition
- Transfers to and from Macau International Airport as well as Outer Harbour & Taipa ferry terminals on arrival and departure

- Lunch, snacks and refreshments provided on each day of the competition
- Closing ceremony & banquet dinner (including food and drink)
- Entertainment
- Entry gift pack
- Discounted pre-event flight time

### **Non-Competitor Entry Fee**

The fee is applicable to individuals part of the official delegation (e.g. heads of delegation, team leaders, coaches and judges in training). This fee is inclusive of:

- Opening ceremony
- Shuttle bus service between GoAirborne Indoor Skydiving Macau and recommended hotels throughout the competition
- Transfers to and from Macau International Airport as well as Outer Harbour & Taipa ferry terminals on arrival and departure
- Lunch, snacks and refreshments provided on each day of the competition
- Closing ceremony & banquet dinner (including food and drink)
- Entertainment

## Fee Structure Based on Discipline

Discipline	Entry Fee (per team) Including FAI/IPC Sanction Fee	Pre-event Training <sup>1</sup> (per hour)
4-Way FS	€650	€650
4-Way VFS	€650	€650
D4W	€650	€650
D2W	€550	€650
Freestyle	€450	€650
Additional Team Member	€350	€650
Official Delegation	€350	
Judge in Training	€350	
Additional Attendees <sup>2</sup>	€350	

Late registrations may be accepted if there is available capacity. The entry fee will be increased by 20% and the FAI/IPC Sanction Fee will be added on top of that.

## 2.12 Facilities

### GoAirborne Indoor Skydiving Macau

The facility is enclosed in one building and designer-built for a modern wind tunnel. Please refer to Annex B for the floorplan and Annex C for additional photos.

#### First Floor

This floor has a gross floor area of about 1,500 m<sup>2</sup> and is directly accessible via the shopping mall, with the food court, restaurants and cinema just steps away. Once entered, guests will be able to enjoy the large space surrounding the wind tunnel and clearly watch the activities in the flight chamber. On this floor, there are 2 training rooms, a large spectator area, and 2 large changing rooms/washrooms.

#### Second Floor

---

<sup>1</sup> Teams that are registered and have paid the full entry fee can book a time slot at GoAirborne Indoor Skydiving Macau prior to the event at €650 per hour. All team members have to be present and flying. Up to 10 days prior to the event, time slots will be reserved for competitors to book and fly at this rate. Flight time could be limited per team to give every team a chance to fly during these dates. The limit will be set when the number of teams are confirmed.

<sup>2</sup> An entry fee of €300 will apply for any additional attendees who are not part of the official delegation or require a sanction fee to be paid. The entry fee will include the opening and closing ceremonies, the banquet and transportation.

This floor has a gross floor area of about 600 m<sup>2</sup>. There are multiple office spaces, 1 large open space and 2 training rooms, that overlook the entire wind tunnel.

### **Judges / Judging Area**

The area around the tunnel is sufficient for both live judges and audience. The facilities can also dedicate two private rooms to the judging panels equipped with computers, video playback monitors, screens, private internet access, scoring system, scanner, phone and printer.

### **Jury / FAI Controller**

GoAirborne Indoor Skydiving Macau can dedicate a private room to the jury and FAI controller equipped with computers, screens, private internet access, phone and printer.

### **Competitors**

The building has washrooms equipped with lockers and showers. The facilities include an exclusive large area (lounge) for the competitors alone, with seating areas, sofas, water machine, coffee machine, etc.

The lounge is also equipped with screens and computers where the competitors can access their judged videos. The existing system automatically uploads all video to the server from all the cameras in the tunnel and enables immediate access to the videos from all stationary computers in the building.

In addition a temporary extension to the building will be set up as the competitors private facility adequate for gear storage, preparation and creeping. Screens will be set up so that the competitors can access their videos and see the scoring.

A sufficient amount of creeping boards is also available for the competitors together with whiteboards for each team.

### **Media Area**

A sufficient area for media is available on site including a private room equipped with computers, screens, private internet access, phone and printer if required.

### **Food Services**

GoAirborne Indoor Skydiving Macau is located within the Lisboaeta Resort which houses 3 hotels, casino and a shopping mall with many retail shops, restaurants, attractions, a cinema and a food court.

Guests will be able to easily get access to food and drinks within the resort. GoAirborne Indoor Skydiving Macau will also be working with Lisboaeta Resort to cater food and drinks for the event.

### **Parking**

GoAirborne Indoor Skydiving Macau is located within the Lisboaeta resort which houses 3 hotels, casino and a shopping mall with many retail shops, restaurants, attractions, a cinema and a food court.

There will be sufficient supplementary parking for the guests.

### **Showers and Toilets**

There are toilets and showers within the facility.

### **Drinking Water Outlets**

There is a sufficient amount of drinking water outlets inside and outside of the building for a large number of people.

## **2.13 Wind Tunnel**

### **15 meters high with an airflow velocity up to 275 km/h**

Two wind tunnel fans channel vertical airflow through the tunnel, guaranteeing the most realistic simulation of what it feels like to jump from an aeroplane at 12,000 feet.

### **Wind Tunnel Specifications**

Manufacturer	<b>Aerodium</b> <a href="https://aerodium.technology/vertical-wind-tunnels/r4/">https://aerodium.technology/vertical-wind-tunnels/r4/</a>
Diameter	<b>4.3 m</b>
Glass Height	<b>11 m</b>
Glass Type	<b>3 layer laminate glass</b>
Speed	<b>275 km/h</b>
Waiting Area	<b>Can be opened anytime due to zero-pressure design</b>
Cooling	<b>Fully regulated climate through chiller system</b>
Air Quality	<b>Even airflow, no turbulence</b>
Maintenance	<b>Daily, weekly, monthly, quarterly, half yearly and annual checklist</b>

### **Cameras**

All cameras will be set up for judging by the live judging panel and are able to record and store the footage for review. The existing system automatically uploads all video to the server from all cameras in the tunnel and enables immediate access to the videos from all stationary computers in the building.

All current cameras comply with the technical requirements in the IPC Competition Rules. GoAirborne Indoor Skydiving Macau is an experienced host of national and international indoor

skydiving events and agrees to set up all required cameras with the technical requirements and backups, in the IPC Competition Rules including:

#### **Camera Placements and Angles**

<b>IS Formation Skydiving</b>	Top view camera.
<b>IS Vertical Formation Skydiving</b>	Bottom view camera.
<b>IS Solo Freestyle</b>	Wide-angle camera placed directly in front of the tunnel.
<b>Speed Routines</b>	Camera placed at the sideline and centerline. All cameras will be set up for judging by the live judging panel.
<b>Free Routines</b>	One camera placed at the centre of the viewing gallery arch.

It is understood and agreed that GoAirborne Indoor Skydiving Macau will have all equipment needed ready and operational for all competition performances and official training. In addition to the minimum requirements, GoAirborne commits to having judging cameras and light bars set up and ready prior to the competition during the pre-event flight time (10 days prior to competition).

#### **Music / Public Address System**

Our facilities are equipped with excellent built-in speakers for music in all areas of the building. Sound engineers will be hired to install professional speakers for the audience as well as all necessary equipment for the athletes performance such as earphones, receivers for the flyers and transmitters.

The Public Address System and speakers for music will be customized to meet the requirements for the competition and the high standard of entertainment that Airspace Indoor Skydiving will present. The temporary system will extend to the added on areas during the competition, such as the food tent.

## **2.14 Pre-event Training**

As a contribution to keeping costs down for competitors, GoAirborne Indoor Skydiving Macau will offer a favorable rate of €650 per hour for pre-event training. This is subject to the condition that the team has registered and made a full payment of the entry fee. All members of the team need to be present and flying during the pre-event training.

#### **Pre Event Flight Time**

GoAirborne Indoor Skydiving Macau will offer all competitors this pre-event training rate 10 days prior to the start of the competition. GoAirborne commits to reserve blocks of time slots exclusively for competitors during this period<sup>3</sup>.

## **2.15 Accommodation**

There are a variety of comfortable accommodation options in close vicinity GoAirborne Indoor Skydiving Macau within all price ranges. GoAirborne has compiled a list of recommended hotels in the area for competitors and spectators to choose from according to their preferences.

Lisboeta Macau is our top recommendation as it is situated in the same building as the tunnel, allowing competitors and spectators easy access to the event. Once fully operational, it will include three hotels, totalling 820 rooms, with 574 rooms at Lisboeta Hotel, 164 at Maison L'Occitane and 82 at Casa de Amigo.

Hotel rates will be negotiated on behalf of the event by GoAirborne Indoor Skydiving Macau, and a dedicated accommodation coordinator from GoAirborne Macau will be provided to assist with bookings and questions.

The free Shuttle Bus between GoAirborne Indoor Skydiving Macau and the hotels will be operating throughout the competition at the competitors convenience.

Please refer to Annex D for location information and photos of the recommended hotels.

---

<sup>3</sup> Time slots will be reserved up to 2 weeks prior to the start of the period of Pre-event Flight exclusively for competitors to make a booking.



**Table of Recommended Hotels**

<b>Lisboeta</b>	<b>Grand Lisboa Palace</b>	<b>MGM</b>	<b>Sheraton</b>
4 ★	5 ★	5 ★	5 ★
€118.20 / night Standard Double Room	€171.90 / night Standard Double Room	€150.40 / night Standard Double Room	€139.70 / night Standard Double Room
Discounted rate to be negotiated	Discounted rate to be negotiated	Discounted rate to be negotiated	Discounted rate to be negotiated
2 mins walk	5 mins walk	15 mins walk	25 mins walk
N/A	2 mins drive	5 mins drive	10 mins drive

Disclaimer: Hotel rates are based on current prices (as of 30 Sep 2021) and are subject to change based on negotiations and future travel conditions.

## 2.16 Local Transportation Provided

GoAirborne Macau Indoor Skydiving will be providing transport services in form of shuttle busses throughout the competition so that competitors, FIA and IPC officials have the flexibility to travel between the tunnel and their hotel.

### Rental Bus Service

Shuttle buses (max. 45-seater) can be arranged through Macau travel agencies.

## 2.17 Outline of Media Plan

### Media Objectives

1. Attract a broader audience for the sport
2. Attract sponsorships
3. Attract other media with national and international coverage
4. Engage athletes (competitors and non-competitors)

### Media Focus

#### 1. Social Media

- Creation both organic posts to excite and attract a broader audience, partners and sponsors through relevant content.

## 2. Email Marketing

- Announcements and invitations will be sent out via email blast to serve as announcements and reminders throughout the pre-event campaign.

## 3. Pre-event Landing Page & Event Website

- Users from social media and email will be directed to the pre-event landing page with the intention of capturing leads and generating further interest.

## 4. Paid Advertisements

- GoAirborne Macau Indoor Skydiving will also invest in paid advertisement during the day-to-day event marketing period leading up to the competition.

## 5. Strategic Partnerships

- Collaboration with tourist departments as well as local and international websites will be established to help reach new audiences and market the event.

## 6. Press Release

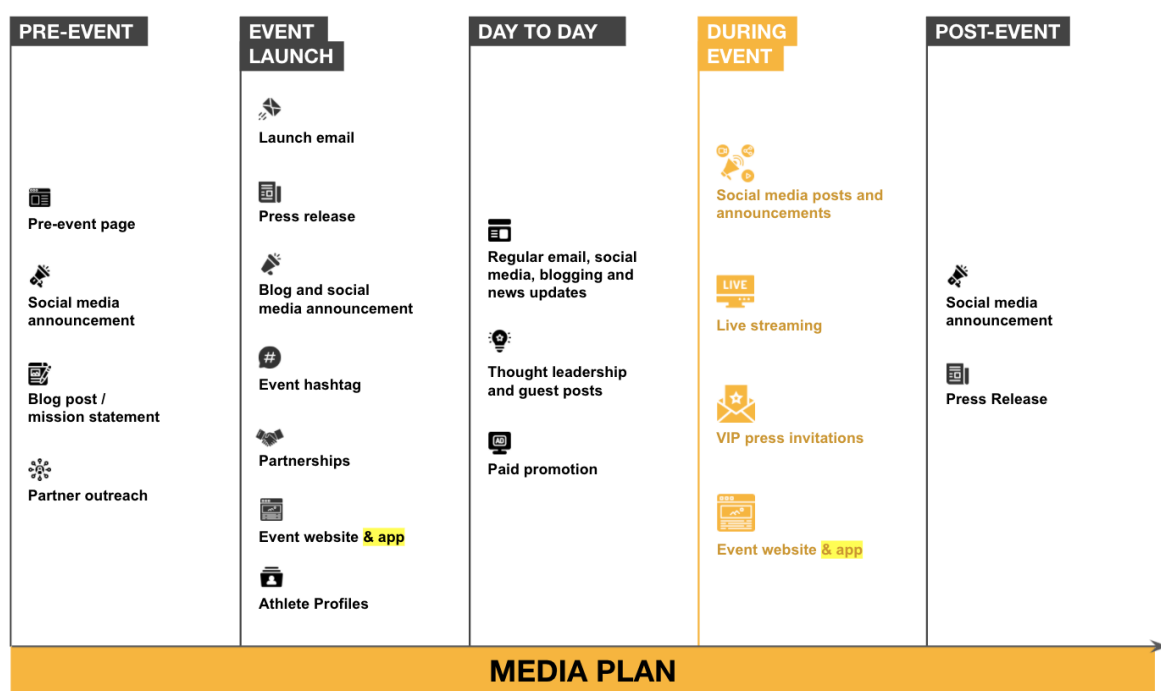
- Press releases will be written with key search terms related to the event for search engine optimisation and increase the chances of reaching interested audiences.

## 7. Exclusive Invitations

- VIP press invitations will be sent out via email to selected national media channels to inform them that they are guests of the upcoming event.

## 8. Event Live Stream

- A live stream of the competition will be made available on both social media and the event website to encourage people to follow the competition.



Marketing Agency

The current integrated marketing agency for GoAirborne Macau is HAVAS which is one of the world's largest global communications and award-winning agencies.

We will use agencies of such caliber to provide media coverage for the event through multiple channels to gain as much exposure as possible.

## **2.18 Accommodation Details for FAI/IPC Officials**

FAI and IPC officials will be accommodated at the Lisboaeta Resort. The hotel is located within the same complex as the GoAirborne Macau Indoor Skydiving tunnel.

Please refer to Annex E for additional photos.

### **Links for more information:**

Lisboeta Macau Resort — <https://www.lisboetamacau.com>

## **2.19 Details of all Judging and Scoring Equipment to be provided**

GoAirborne Indoor Skydiving Macau commits to acquire judging and scoring equipment that meet the requirements set forth by the IPC for all competition events.

## **2.20 Public Address System**

Our facilities are equipped with a proven and well functioning public address system for the whole building.

We also have good relations with professional sound engineers that will be hired to instal a temporary professional public address system specifically to meet the requirements for the competition and extend to the added areas such as the food tent.

## **2.21 Safety**

All legal requirements are met for the GoAirborne Indoor Skydiving Macau building in regard to safety and emergency plans, emergency exits, fire-extinguishers, etc.

Paramedics and on-site medical personnel will be arranged according to the requirements for the competition. Full ambulance and medical services are available through government emergency services.

**Nearest Hospital: University Hospital Macau**

Block H, Macau University of Science and Technology,  
Avenida Wai Long, Taipa, Macau  
HOTLINE: +853 2882 1838  
(8 mins by car from the tunnel)

### **Macau Emergency Numbers**

Emergency: 999  
Fire Station: 572222  
The Police: 573333

## **2.22 Proposals for Event Officials**

Event Officials are to be determined in association with the IPC. GoAirborne Indoor Skydiving Macau will cover travel, food and accommodation for the FAI controller, chief judge and assistant to the chief judge. For all other members of the judging panel and event officials, only food and accommodation will be covered.

## **2.23 Details of On-Site Communications**

GoAirborne Indoor Skydiving Macau is fully equipped with multiple phone lines for both in-house communication and external calls. All offices and conference rooms are equipped with phones.

Mobile phone communication will also be available, where messages can be sent to all registered phone numbers. Competitors and members of the delegation can choose to register one or several phone numbers on arrival to receive updates and information during the event. There will be an application that will be available for free downloading where a large range of information and news will be available.

## **2.24 National, State, Provincial, Local, Organizer Legislation / Rules**

There are currently no national, state, provincial or local legislation/rules that apply to this event. The organizer, GoAirborne Indoor Skydiving Macau, requires all competitors to sign a waiver and risk acceptance statement and to wear a helmet while flying.

## **2.25 Visa Requirements**

All visitors are required to have a visa except for nationals of countries that are exempted from a visa or entry permit. Below are countries exempted from visa requirements with their maximum limit of stay:

Maximum Limit of Stay	Countries
14 Days	Brunei
30 Days	Australia, Canada, Chile, India, Indonesia, Kiribati, Malaysia, Monaco, Namibia, New Zealand, Philippines, Samoa, Seychelles, Singapore, South Africa, Thailand, Turkey, the United States of America, Uruguay
90 Days	Andorra, Austria, Belgium, Bosnia and Herzegovina, Brazil, Bulgaria, Cape Verde, Croatia, Czech, Cyprus, Denmark, Dominica, Egypt, Estonia, Finland, France, Germany, Greece, Hungary, Iceland, Ireland, Israel, Italy, Japan, Latvia, Lebanon, Liechtenstein, Lithuania, Luxembourg, Macedonia, Mali, Malta, Mexico, Mongolia, Netherlands, Norway, Poland, Portugal, Romania, Serbia, Slovak, Slovenia, South Korea, Spain, Sweden, Switzerland, Tanzania
180 Days	The United Kingdom
1 Year	Holders of "Hong Kong Permanent Identity Card" or "Hong Kong SAR Re-entry Permit". (* Valid "Hong Kong Identity Card" holders are required to bring their valid passport or travel documents when they enter Macau.)

Starting from July 1, 2010, passport holders of Bangladesh, Nepal, Nigeria, Pakistan, Sri Lanka and Vietnam are required to obtain an entry visa before arriving at the Macao Special Administrative Region. Visa-upon-arrival is no longer applicable to these nationals.

Visitors who are not exempted from a "visa" and "entry permit" can apply for a "visa-upon-arrival" and "Authorization to Enter and Stay", or apply for a "visa" of the Macao Special Administrative Region in advance through an embassy or consulate of the People's Republic of China.

**Visit these sources for more information:**

[Application for Macao Visa through Chinese Embassy or Consulate](#)  
[Entry and Exit of Non-residents](#)

## 2.26 Medals

GoAirborne Indoor Skydiving Macau will choose to provide their own award medals conforming to the FAI specifications, in accordance with IPC medal requirements.

## 2.27 Anti-Doping Requirements

GoAirborne Indoor Skydiving Macau will not include anti-doping tests for the event. However, should anti-doping testing become a requirement Airspace Indoor Skydiving agrees to provide appropriate facilities?

## **2.28 Date of Post Event Report**

Post-event report will be furnished on 15 April 2024, 2 weeks after the end of the competition.

## **2.29 Additional Information**

### **Opening and Closing Ceremonies**

Both opening and closing ceremonies will be held on-site to allow the organizers full control over the quality of the event and to avoid unnecessary transportation of people.

The opening ceremony will be a spectacular affair to set the mood for the upcoming event where the athletes will be introduced and everyone welcomed. The ceremony will be retained to the venue, which will be decorated and prepped for the action.

The agenda will be carefully planned to run smoothly and will include both speeches and spectacular entertainment. The closing ceremony and award ceremony will be planned and executed with the same precision and standard. GoAirborne Indoor Skydiving Macau promises nothing but a grand opening and a grand final for the event.

### **Additional Attendees**

GoAirborne Indoor Skydiving Macau is able to accommodate persons in addition to the official delegation if notice is given before the event.

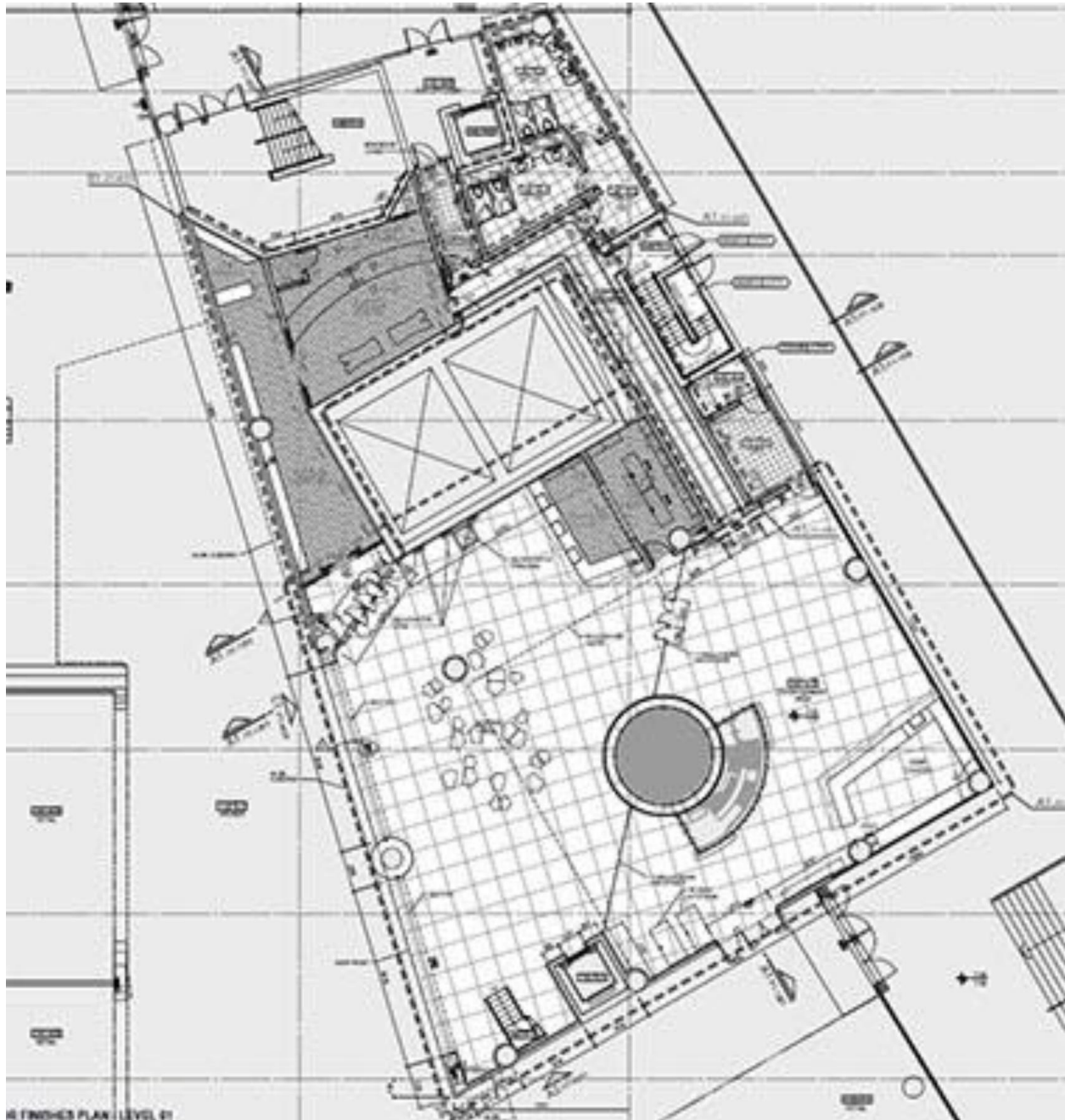
An Entry Fee of €350 will apply for any additional attendees. The entry fee will include the opening and closing ceremonies, the banquet and transportation.

## **3. ANNEX**

### **Annex A :Application Fee — Proof of Payment**

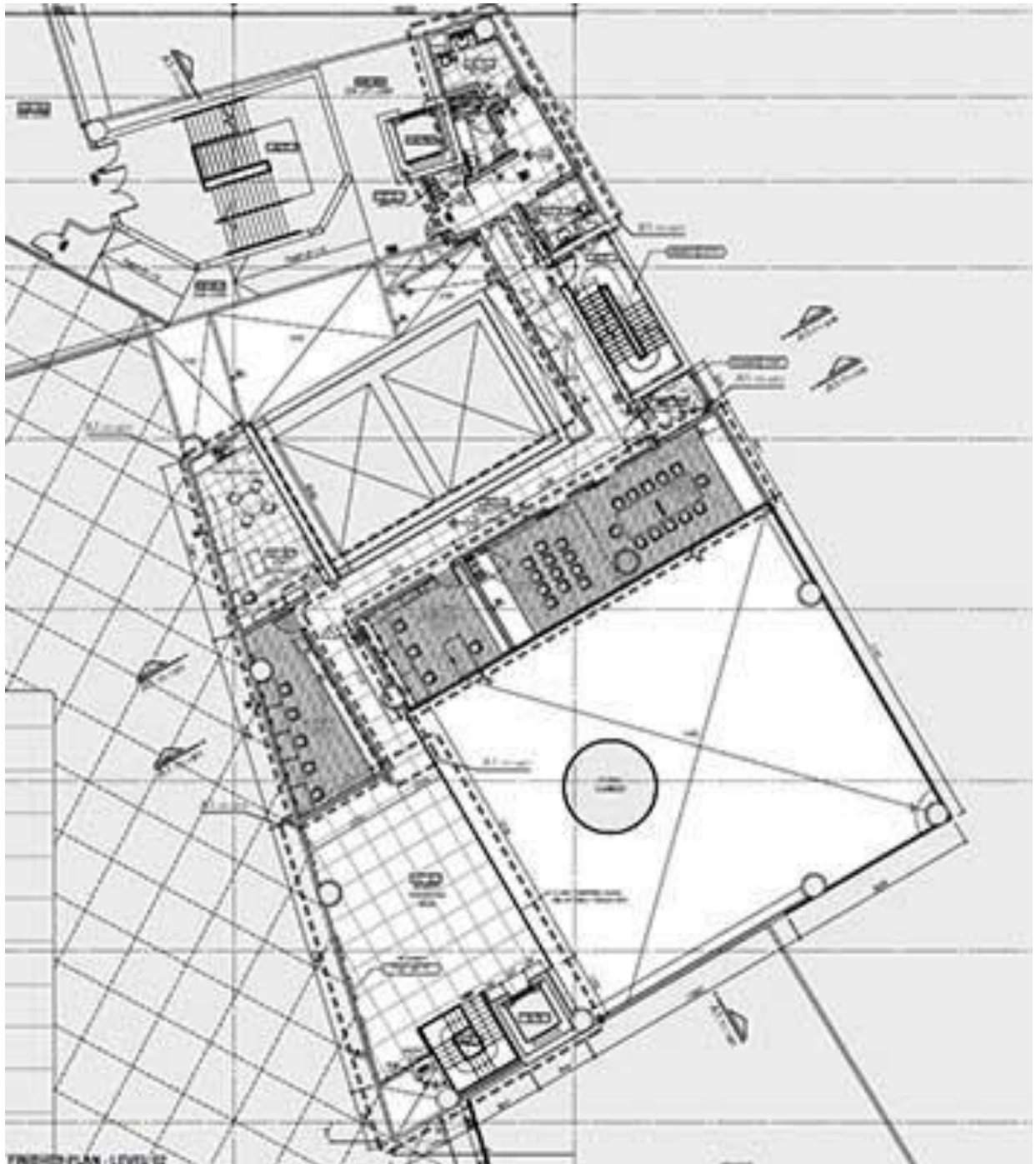
## Annex B: GoAirborne Facility Floor Plan & Details

### Level 1



## Annex B: GoAirborne Facility Floor Plan & Details

### Level 2





## Annex C: GoAirborne Facility Photos

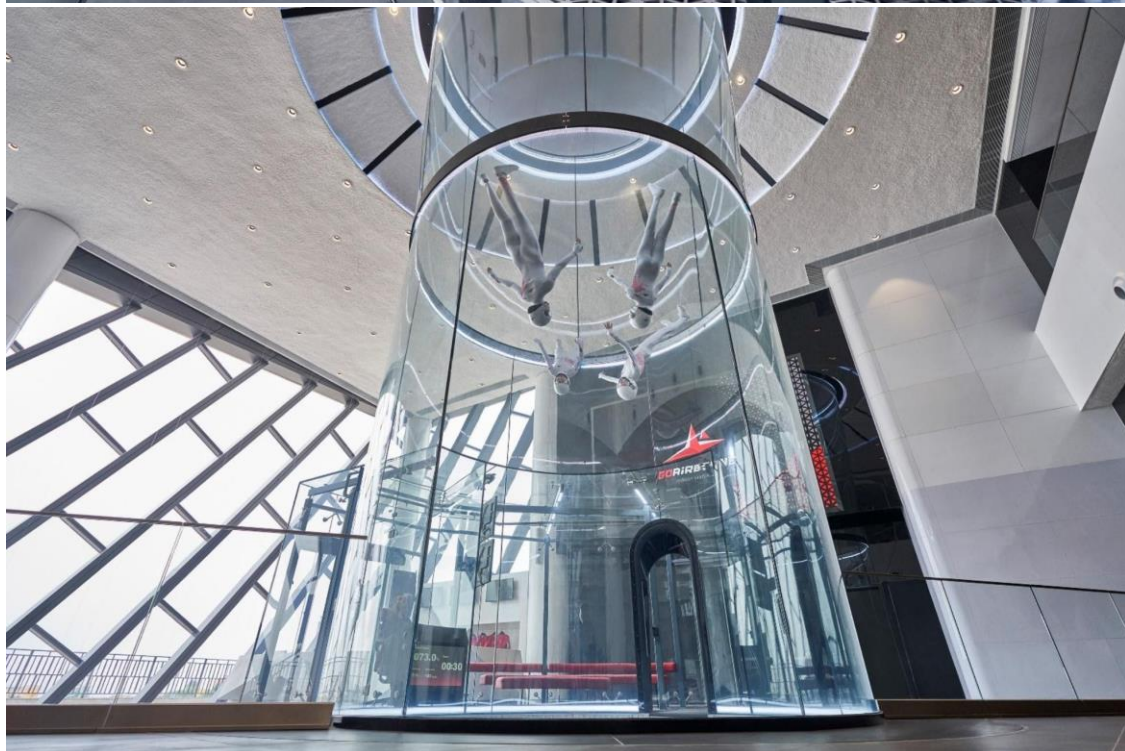
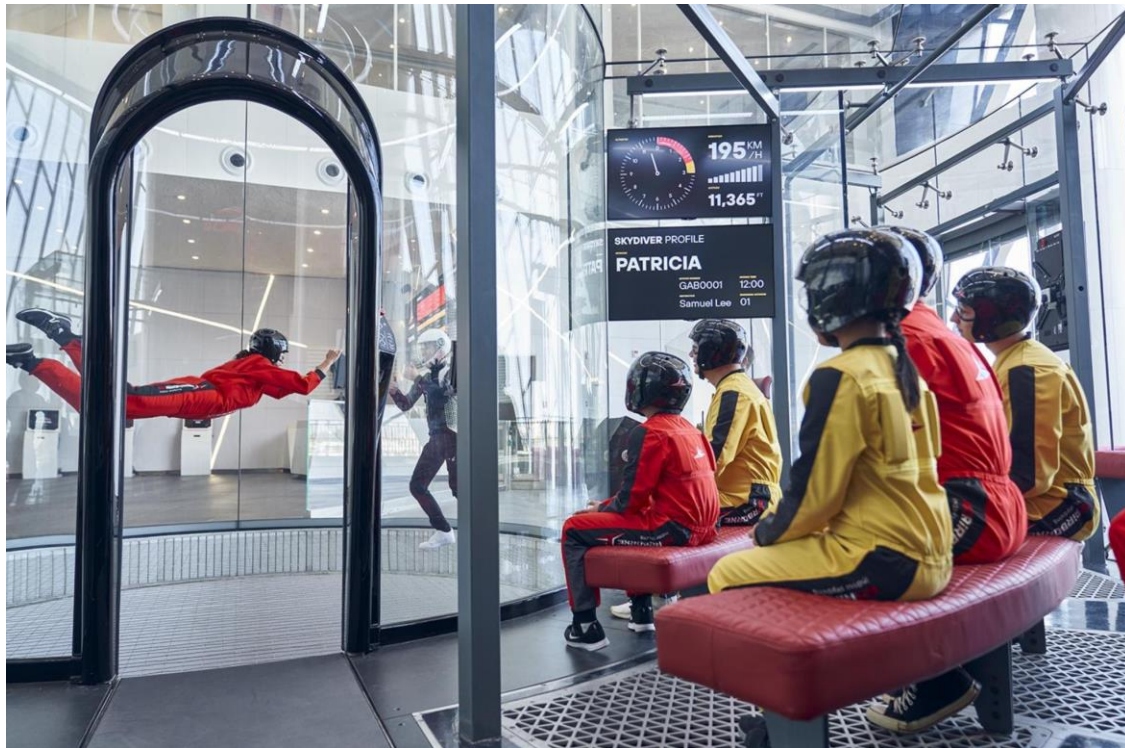


## Annex C: GoAirborne Facility Photos





## Annex C: GoAirborne Facility Photos

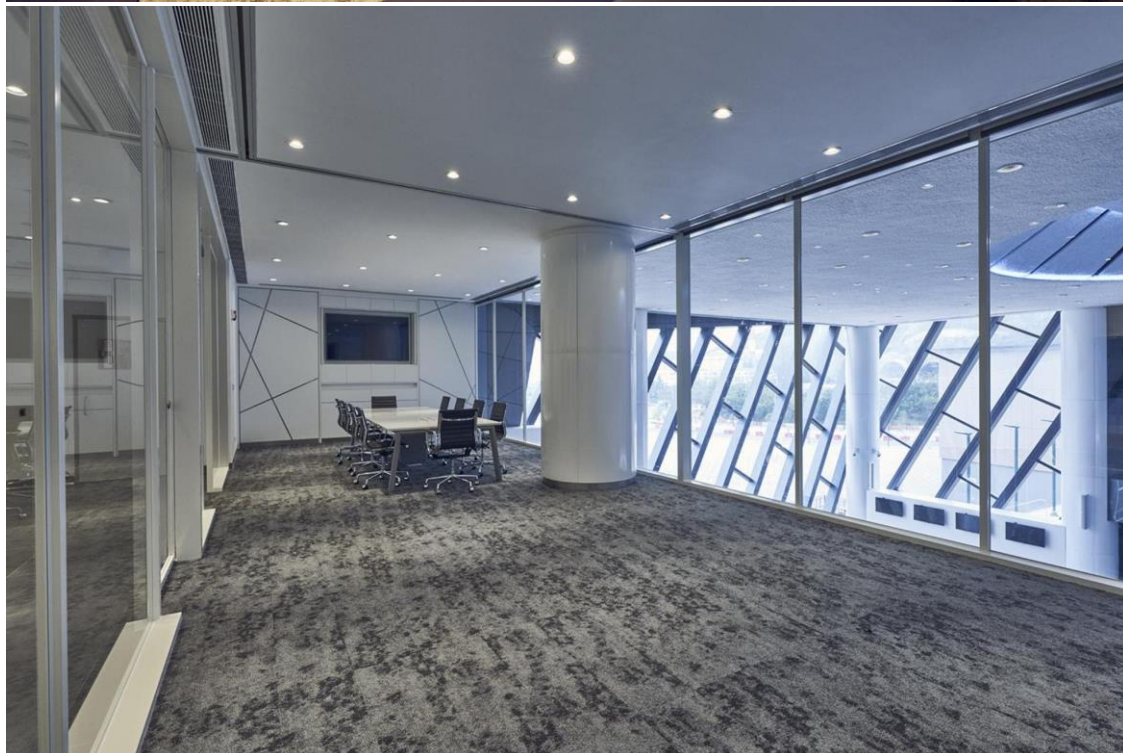


## Annex C: GoAirborne Facility Photos





## Annex C: GoAirborne Facility Photos



## Annex D: Hotel Locations and Room Photos

### Lisboeta

[View on Google Maps](#)



### Grand Lisboa Palace

[View on Google Maps](#)



### MGM

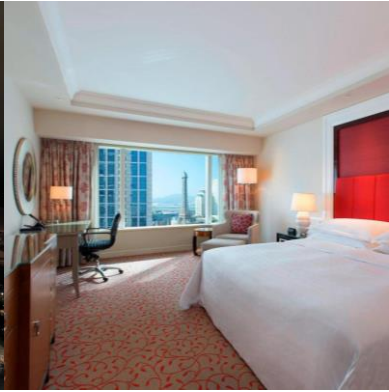
[View on Google Maps](#)



### Sheraton

[View on Google Maps](#)

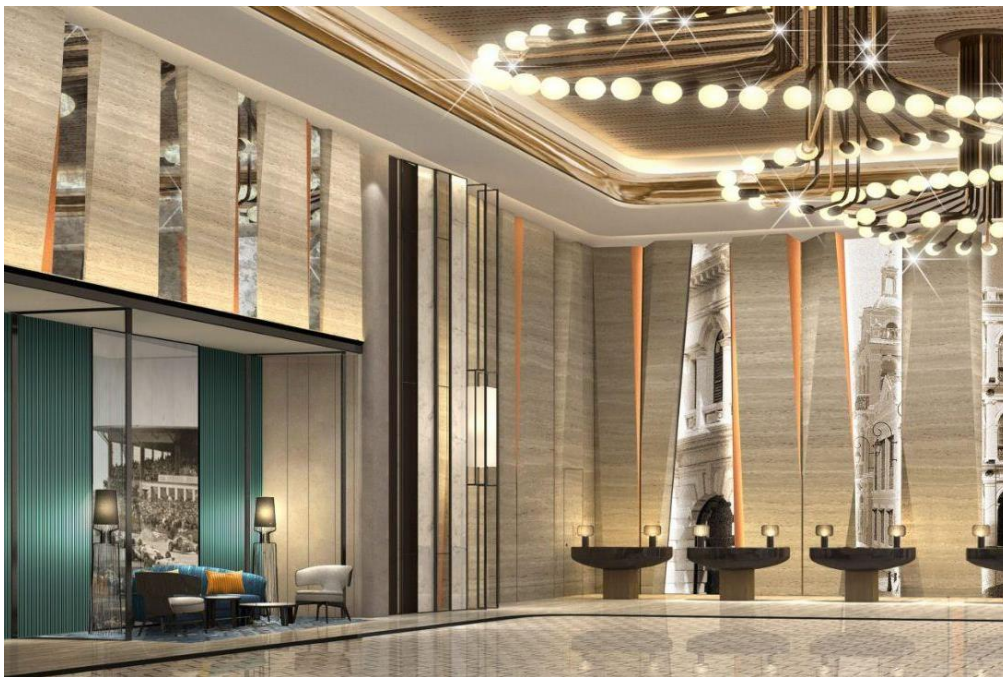




## Annex E: Accommodation Details for FAI / IPC Officials — Lisboeta Hotel



Lisboeta Macau Facade



Lisboeta Macau Hotel Lobby



## Annex E: Accommodation Details for FAI / IPC Officials — Lisboeta Hotel



Lisboeta Macau Hotel Rooms

## Annex E: Accommodation Details for FAI / IPC Officials — Lisboeta Hotel



Lisboeta Shopping Mall



Lisboeta Hotel Restaurants



Lisboeta Hotel Swimming Pool Facility

