



## Bulletin 1 - April 2025

### 2025 FAI World Drone Soccer Championships

Xuhui District, Shanghai, China

**Saturday 15<sup>th</sup> to Tuesday 18<sup>th</sup> November 2025**

Arrival on Friday 14<sup>th</sup> November - Departure on Wednesday 19<sup>th</sup> November

FAI website: <https://www.fai.org/wdsc>

## ORGANISER AND LOCATION

---

The 2025 FAI World Drone Soccer Championships (WDSC) will be hosted in Shanghai city, People's Republic of China. The WDSC will be organised by the Aero Sports Federation of China (ASFC), and the Shanghai Science and Technology Sports Management Center, established in March 2019, which reports to the Shanghai Sports Bureau.

Shanghai, one of the four direct controlled municipalities in China, is located on the eastern edge of the Yangtze River Delta. It faces the East China Sea to the east, borders the Yangtze River to the north, adjoins Hangzhou Bay to the south, and connects with Jiangsu Province and Zhejiang Province to the west. As China's largest economic center and an international metropolis, Shanghai is approximately 1214 km away from Beijing. It is the leading city of the Yangtze River Economic Belt and a major global transportation hub.



Xuhui District, located in the southwest of the central urban area of Shanghai, is adjacent to the Huangpu River in the east and Minhang District in the west. It is an important cultural, educational, and scientific and technological center in Shanghai. As China's economic, financial, trade, and scientific and technological innovation center, the GDP of Xuhui District reached 393.12 billion yuan in 2024, ranking first among the central urban areas of Shanghai. Xuhui District is leading with artificial intelligence, cultivating emerging industries such as low - altitude economy and embodied intelligence, and promoting the integrated development of the digital economy and high - end manufacturing, providing industrial support for scientific and technological sports events.

Xuhui District is leading with artificial intelligence, cultivating emerging industries such as low - altitude economy and embodied intelligence, and promoting the integrated development of the digital economy and high - end manufacturing, providing industrial support for scientific and technological sports events such as drone soccer.

**WDSC venue:** Shanghai Stadium in the Xujiahui Sports Park

**Address:** 1111 Caoxi North Road (near Zhongshan Sount 2nd Road), Xuhui District.

**Coordinates:** 31.194236°N - 121.440757°E

**Note:** Xujiahui Sports Park has 14 entry gates. Gates 1 and 2 provide the fastest access to the Shanghai Stadium.



Xujiahui Sports Park is located in the core area of the Xuhui District. The park covers an area of 35.96 hectares with a building area of 250,000 square meters. It was renovated and officially opened in 2022, integrating competitive sports, mass fitness, and urban leisure functions. The park includes iconic venues such as Shanghai Stadium (which can accommodate 18,000 people), Shanghai Grand Stage (a large - scale comprehensive sports venue), and Shanghai Natatorium. It has hosted top - level events such as the Chinese Super League, CBA games, and the final of the China Table Tennis Super League.

Xujiahui Sports Park is not only a venue for sports events but also a paradise for citizens' fitness. Its "Wanti Hui" comprehensive hall is equipped with diverse facilities such as badminton courts, basketball courts, and tennis courts. It receives over 5 million visitors annually and is open 24 hours through intelligent management. Surrounding the park are cultural landmarks such as Xujiahui Business District, Shanghai Jiao Tong University, and Xujiahui Catholic Church, forming an urban vibrant area integrating sports, commerce, culture, and tourism.

As a symbol of the international event capital, Xuhui Sports Park, with its digital facilities (such as drone inspections, dynamic traffic control) and mature operation experience, has become a window to showcase Shanghai's scientific and technological innovation and urban governance capabilities. This location not only continues Shanghai's sports tradition since the 1970s but also demonstrates its ambition to lead emerging technology sports.

The competition will be run in the Shanghai Stadium which is a world class sports facility capable of hosting various large scale international events.



## Weather in Shanghai

According to the statistics of Climate - Data.org, the temperature in mid - November in Shanghai usually ranges from 10°C to 18°C (50°F to 64°F). The city has a mild and cool climate with moderate precipitation. The average wind speed is 9 km/h (5.5 mph).

## Shanghai International Airports

There are two international airports in Shanghai:

- **Shanghai Hongqiao International Airport** (IATA code SHA) distant about 15 km from Xujiahui Sports Park.
- **Shanghai Pudong International Airport** (IATA code PVG) distant about 50 km from Xujiahui Sports Park.

The organizer will provide free shuttle buses for the participants to travel from those airports to the designated hotels. The journey will take about 25 minutes from Hongqiao Airport and about one hour from Pudong Airport.

Details for the fee shuttles will be provided in Bulletin 2.

The other means of transportation available from the two airports are subway and taxi.

### Subway

- From Shanghai Hongqiao Airport: Metro Line 10 to Xujiahui Station. The journey takes about 30 minutes and the ticket price is 4 yuan (0.5 euros).
- From Shanghai Pudong Airport: Metro Line 2 to People's Square Station and then transfer to Metro Line 1 to Xujiahui Station. The whole journey takes about 90 minutes and the ticket price is 7 yuan (0.9 euros).

### Taxi

- From Shanghai Hongqiao Airport, it takes about 20 minutes to reach the competition venue, and the fare is approximately 50 yuan (6.5 euros).
- From Shanghai Pudong Airport, It takes about 60 minutes to reach the competition venue, and the fare is approximately 180 yuan (23 euros).

## FAI CLASS

---

The 2025 WDSC concerns the FAI class F9A (Drone Soccer) which includes two subclasses: F9A-A (Drone ball diameter 40 cm) and F9A-B (Drone ball 20 cm).

A different event will be organised in each sub-class.

For each subclass, every NAC will be authorised to register two different drone soccer teams.

Every match will be played with 5 active players in each F9A-A sub-class team and 3 active players in each F9A-B sub-class team. For both sub-classes, it will be possible to register 2 additional players in each team. This means a maximum number of 7 players authorized to be registered in a F9A-A sub-class team, and 5 in a F9A-B sub-class team.

## RULES

---

### FAI Sporting Rules

The sporting rules for the WDSC will be compliant with the FAI F9A class rules defined in the FAI Sporting Code Section 4 - Aeromodelling Volume F9 Drone Sports 2025 Edition effective 1<sup>st</sup> May 2025. They will be detailed in a document named '2025 FAI World Drone Soccer Championships Sporting Rules' including the event format retained for each sub-class by considering the number of drone soccer teams expected to participate.

In addition, the following documents will be applicable by consulting the edition effective at the date of the event:

- FAI Sporting Code Section 4 - Aeromodelling CIAM General Rules Volume.
- FAI Sporting Code General Section Volume.
- FAI Code of Ethics.

- FAI Disciplinary Code.

### **FAI Sporting Licence**

Every competitor and each team manager of any national team must possess a valid FAI Sporting Licence (Aeromodelling discipline) registered in the FAI database. A FAI Sporting Licence is not required for the helpers.

The holder of a FAI Sporting Licence may be required to produce, as proof of identity, an official document including his/her names, photograph and signature.

**Complaint and protest** (See FAI Sporting Code General Section Volume 6.2.2 & 6.3.2, and CIAM General Rules Volume C.20)

The purpose of a complaint is to obtain a correction without the need to make a formal protest.

It is recommended that a complaint is made before submitting a protest.

If dissatisfied by the decision, the complainant(s) concerned must inform the Contest Director as soon as possible of the intention to submit a protest.

All protests must be presented by the team manager(s) in writing in official languages to the Contest Director and must be accompanied by the deposit of a fee of 50 CHF (or equivalent amount for a different currency). In the case of a joint protest, every protesting team manager must pay the protest fee.

### **Anti-doping statement**

A competitor who needs for medical reasons to take any of the substances listed on the WADA Prohibited List must have a valid Therapeutic Use Exemption (TUE) signed by FAI.

To access the current WADA prohibited list of substances and additional information regarding the TUE, see the FAI website with the following link: <https://www.fai.org/page/anti-doping-therapeutic-exemptions>.

### **UAV regulations**

To access current requirements to comply with UAV regulations applicable in China:

<https://www.doc88.com/p-26716488906397.html>.

## **OFFICIAL LANGUAGES**

---

The official languages will be English and Chinese. English language always prevails concerning all elements of the competition, namely FAI documents, competition rules and Bulletins.

## **PARTICIPANTS**

---

Every NAC will be authorised to register:

- A Team Manager and an Assistant Team Manager.
- 2 drone soccer teams in F9A-A subclass with 5 to 7 players in each team.
- 2 drone soccer teams in F9A-B subclass with 3 to 5 players in each team.
- Supporters.

### **Notes:**

- *The team manager is mandatory but may be a player of a drone soccer team. The Assistant Team manager is optional.*
- *For each subclass, a person cannot be registered as being a player in two different drone soccer teams.*

### **Additional drone soccer teams**

According to CIAM General Rules Volume C.5.3 f), the organizer will evaluate after the deadline defined for submission of the Preliminary Entry Form (PEF) the participation level which may be expected. If the number of expected participants is below the minimum number which makes the event financially viable, the organiser will ask CIAM to consider cancelling the championship(s), or to initiate a second phase for accepting additional drone soccer teams.

In case a second phase is initiated, the organizer, with the approval of CIAM Bureau, may send out invitations to the NACs which already had expressed with the PEF their intention to participate.

## **FAI JURY**

---

Bruno DELOR (President) - France

Antonis PAPADOPOULOS - Greece

Zhuoyue YANG - People's Republic of China

**Reserve:** Massimo SEMOLI — Germany

## **REFERREES**

---

The referees will be listed in the Bulletin 2.

## **ORGANISER OPERATIONAL OFFICIALS**

---

**Event Director:** Sijia Liu - People's Republic of China

## **CLASSIFICATIONS AND AWARDS**

---

In each subclass:

- The best placed team will be awarded the title of FAI Drone Soccer World Champion for the subclass concerned.
- FAI medals and diplomas will be awarded to the Team Manager and to every player of the drone soccer teams placed first, second and third.

Prizes and trophies may also be awarded by the organiser, and the hosting city or organisation.

## **PRELIMINARY SCHEDULE**

---

The preliminary schedule is as follows and will be detailed after getting in each subclass the number of registered drone soccer teams.

**Friday 14<sup>th</sup> November** - Arrival and registration on the venue

**Saturday 15<sup>th</sup> November**

- Officials briefing
- Model processing
- Flight practice
- Team manager's meeting
- Opening Ceremony

**Sunday 16<sup>th</sup> & Monday 17<sup>th</sup> November** - Competition

**Tuesday 18<sup>th</sup> November**

- Competition reserve day
- Prize-giving & Closing Ceremony
- Closing Buffet Dinner

**Wednesday 19<sup>h</sup> November** - Departure

## **ENTRY FEES**

---

- Dedicated Team Manager or Assistant Team Manager: 300 €.
- Drone soccer team:
  - . 1400 € for F9A-A subclass.
  - . 1000 € for F9A-B subclass.

**Note:** Due to the fact Drone Soccer is a team sport, an entry fee per drone soccer team is more appropriate than an entry fee for each player.

- Supporter: 60 €



## DEADLINES

---

### Preliminary Entry Form (PEF)

The PEF must be considered by a NAC as an intent to participate.

In order to estimate numbers of countries and drone soccer teams which may be expected to participate, a first PEF had been distributed on 3<sup>rd</sup> March 2025 with a deadline to return it fixed on end March. PEFs had been received from the following countries: Bulgaria - Chinese Taipei - Colombia - France - Germany - Hong Kong, China - People's Republic of China - Peru - Republic of Korea - Spain - Türkiye- USA.

**The NACs which have not yet sent a PEF are requested to fill out the enclosed PEF, and to return it signed and stamped no later than 15<sup>th</sup> June 2025 to [registration@faidroneworld.aero](mailto:registration@faidroneworld.aero).**

### On-line registration and payment of the entry fees

An on-line registration including payment of the entry fees will be done with eNavigator. This application had been developed by Noosphere company in partnership with FAI and successfully used for all FAI World Drone Racing Championship.

*Note: This way to proceed replaces the Final Entry Form requested to be filled and returned for the other CIAM Championships.*

An individual code access and detailed information how to proceed the registration on eNavigator will be sent to the person appointed by the NAC on their PEF. So, it is necessary to get the PEF mentioning the names and email address of the NAC contact person who will be in charge of the registration on eNavigator.

**Deadline to proceed the on-line registration and pay the entry fees: 31<sup>th</sup> August 2025**

***Note:** The upload of the national anthem (.mp3 audio format) will be required on eNavigator .*

Entry fees received after the deadline may be subject to a penalty fee up to 20 % of the total amount of the entry fees to be paid. Entry fees will not be accepted on arrival except in exceptional circumstances and with the prior agreement of the organiser.

In case of a withdrawal after entry fees have been paid, a refund will be considered only in case of force majeure or exceptional circumstances.

## LODGING AND FOOD

---

All three hotels proposed below are about 55 km from Pudong International Airport (PVG), and 15 km from Hongqiao Railway Station.

Prices mentioned for a room per night are for 2 persons and include breakfast.

***Note:** Information regarding how to proceed the reservation will be provided in the Bulletin 2 including dedicated booking contacts (email/phone) and negotiated discount prices.*

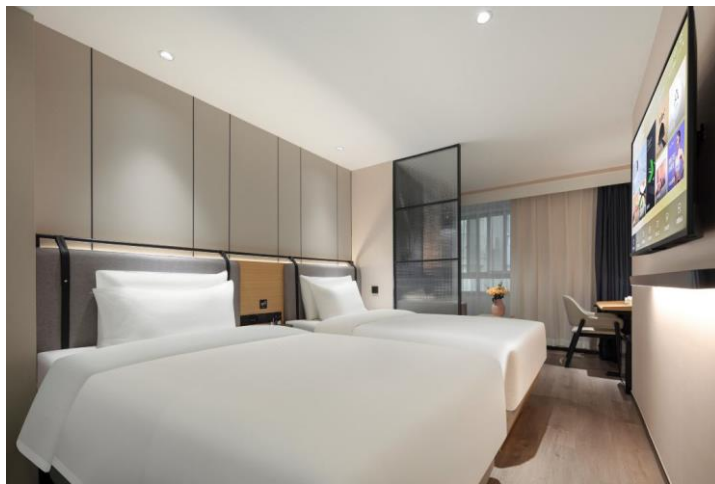
### 1. Atour X Hotel - 3 stars (newly opened with 4 stars equivalent facilities and service)

**Price:** 95 € per night

**Distances:** 500 meters from Shanghai Stadium and 300 meters from Shanghai Stadium Metro Station.

The hotel is located in the Xujiahui commercial district nearby attractions including Xingyou Mall, Guangda Convention and Exhibition Center, and Hengshan Street, all being among Shanghai's most vibrant shopping and entertainment areas. Within short walk, there are Shanghai Grand Stage and Shanghai Tourist Distribution Center offering sports, cultural, and leisure activities.

The hotel is very placed for transportation is very convenient: close from Shanghai Stadium Metro Station exit 4 on Metro Line 4 and 15 minutes drive from Shanghai South Railway Station.



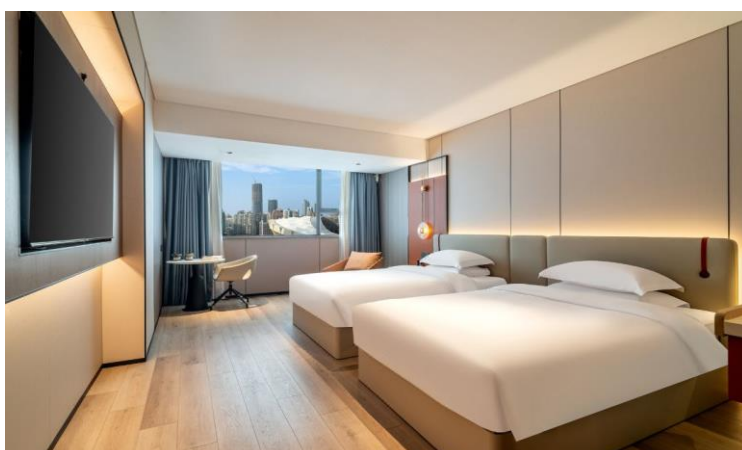
## 2. Quili Hotel - 4 stars

**Price:** 95 € per night

**Distances:** 600 meters from Shanghai Stadium and 800 meters from Longcao Road Metro Station.

The hotel is located on Longhua West Road, in the Xujiahui commercial district, adjacent to Shanghai Stadium, the Inner Ring Elevated Road, and metro lines 1, 3, 4, 11, and 12 (with direct access to Disneyland)

The hotel is close from Shanghai South Railway Station, offering convenient driving access to Hongqiao Airport, Hongqiao International Hub, and Pudong International Airport, ensuring efficient and seamless transportation.



## 3. Radisson Blu Shanghai Stadium - 5 stars

**Price:** 120 € per night

**Distances:** 890 meters from Shanghai Stadium and 860 meters from Shanghai Stadium Metro Station.

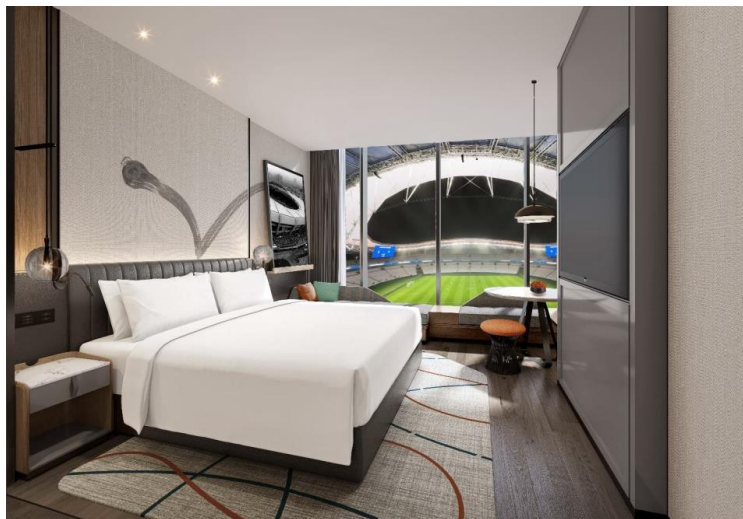
Radisson Blu Shanghai Stadium, a new landmark in Shanghai, will open on April 18, 2025, located at the heart of Shanghai Stadium within Xujiahui Sports Park, a collaboration between Juss Sports and Radisson Group.

The hotel includes 208 meticulously appointed rooms and suites reflect the brand's signature modern design, including Presidential Suite, 10 Suites, 23 Executive Rooms, 105 Deluxe Rooms, and 69 Superior Rooms, with selected rooms offering a unique view overlooking the entire sports field.

With nearly 1,000 square meters of meeting space, including a 450-square-meter ballroom and six multifunctional meeting rooms, the hotel caters to various banquet and conference needs.

The hotel offers a variety of dining options, including an all-day-dining Western restaurant serving international cuisine, a Chinese restaurant that integrates Cantonese and Huaiyang cuisine, and a spacious, elegant lobby lounge, perfectly blending the essence of Eastern and Western dining.





### **Catering**

Catering services will be provided on the competition venue. Each meal will be approximately 15 €, including vegetarian options.

### **Closing Buffet Dinner**

A Closing Buffet Dinner will be held after the Prize- giving and Closing Ceremony.

The price of a ticket for a registered participant is 50 €. The banquet fee must be paid at the same time as the entry fee.

### **INSURANCE**

---

The organizer will provide a limited third-party insurance for all participants during the competition in accordance with the laws of the host country. This insurance covers situations where accidents cause injury to others and property damage. Participants are advised to purchase their own personal health insurance and travel insurance before traveling.

### **PASSPORT - VISA**

---

Chinese authorities require passport to be valid for at least 6 months before entering China.

The following documents are required for a visa to enter in China for the countries concerned:

- Passport valid for at least 6 months from the date of the visa application form.
- Visa application form and confirmation page signed.
- ID photo which should be recent (within 6 months), front view, white background, in 48mm x 33mm size without head covering.

Find your local Chinese Embassy for details:

[https://www.fmprc.gov.cn/mfa\\_eng/wjb\\_663304/zwjg\\_665342/2490\\_665344/](https://www.fmprc.gov.cn/mfa_eng/wjb_663304/zwjg_665342/2490_665344/)

### **ADDITIONAL INFORMATION**

---

#### **Bulletin 2**

Bulletin 2 is expected to be published before end July 2025.

#### **Registration at the arrival**

The registration will be done on the arrival day.

The team manager must bring two national flags (approximately 1m x 1.5m) at the registration on the venue. They will be returned to the team manager at the end of the WDSC.

At the end of the registration, the team manager will receive packages (ID cards, banquet tickets, souvenirs, etc.) for the registered participants of the national team concerned.

## Local transportation

Details will be provided in Bulletin 2 for local transportation from the hotels to the venue on every competition day, and from hotels to the banquet.

## Medical service

An ambulance, a doctor and a nurse will stand-by during the WDSC.

## Local currency

1 Chinese Renminbi (RMB) commonly named 'yuan' is about 0.13 Euro and 0.14 US Dollar (April 2025)

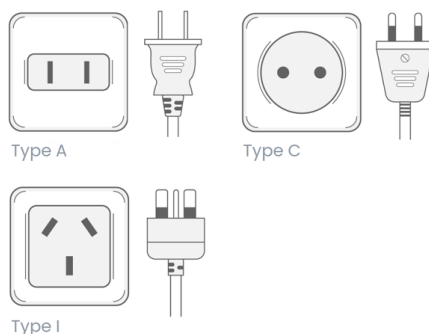
The best way to process currency change in China is at the international airports and in major banks, such as Bank of China and China Merchants Bank. A commission may be required.

Travelers can get cash with their Visa or Master cards in most ATM banks. Consult your credit card company for fees and eventual restrictions.

## Electricity

For China there are three associated plug types, types A, C and I. Plug type A is the plug which has two flat parallel pins, plug type C is the plug which has two round pins and plug type I is the plug which has three flat pins in a triangular pattern.

China operates on a 220V supply voltage and 50Hz.



## Websites

**FAI website:** <https://www.fai.org/wdsc>

In addition, the 2025 FAI WDRC Organising Committee website is expected to be available in second part of May 2025.

## Communication

Free WiFi will be available on the venue.

Gmail, Facebook, Youtube, Facebook, Instagram, Twitter, and some other are generally unavailable for service in China. Use of a VPN service may allow to recover access to Gmail and social media.

WhatsApp Messenger is not active in China. It is recommended to use WeChat which is the equivalent Chinese Messenger application.

## Spectators and media

The venue will be open to the public. All matches will be displayed on real time for the spectators on the big screen of the stadium.

A live scoring system will be available with LED displays for public information, such as live scores and temporary rankings during the competition.

The organiser will ensure the best media coverage of the WDSC.

## **ORGANISER CONTACT DETAILS**

---

### **Aero Sports Federation of China (ASFC)**

**Contact person:** Ms Ye LI

**Email:** yeatslee@126.com

**Mobile phone:** 0086-10-67051859