



Proposal to host the
FAI World Gliding Championships 2012
Narromine, New South Wales, Australia



TABLE OF CONTENTS

Letters of Support

Section One	Application to host the FAI World Gliding Championships	1
	Event and Year	2
	Proposed Site of the Event	2
	Accommodation and Food for Competitors	9
	Competition Area	11
	Rules	13
	Costs	14
	Glider Hiring	15
Section Two	Narromine, New South Wales: Gliding Capital	17
	Narromine Aviation	18
	Major Annual Functions	20
	International Access	21
	Access via Sydney International Airport	23
Section Three	Pre and Post Championship touring options	25
	Regional New South Wales	26
	Sydney and Surrounds	32
Section Four	Additional Support	38

Appendices

1. Dubbo Conference Facilities
2. Dubbo Accommodation
3. Travel and Visitor Information

LETTERS OF SUPPORT





Premier of New South Wales



MESSAGE FROM THE PREMIER OF NEW SOUTH WALES

The New South Wales Government, through Events New South Wales, is pleased to support the bid by the Gliding Federation of Australia to secure the FAI World Gliding Championships 2012 for Narromine, New South Wales.

Narromine has been a gliding site since 1947 and a full time centre for the sport for over 30 years. It has hosted numerous Australian and state championships and many soaring records have been flown from Narromine over its surrounding open plains.

Internationally known for its thermals and unrestricted airspace, Narromine is one of the world's best gliding locations with hundreds of gliding enthusiasts from around the world converging each year to make the most of its excellent conditions.

The Narromine airfield has all the requisite technical facilities and infrastructure to stage a successful World Gliding Championships in 2012.

Further, the event management team to be established by the Gliding Federation of Australia is highly experienced in the organisation of international competitions including the 2001 world championships in Australia.

I am sure all competitors and attendees will receive a typically warm Australian welcome at the championships and avail themselves of the many pre and post-touring options in Sydney and New South Wales.

A handwritten signature in black ink, reading 'Nathan Rees'.

Nathan Rees
Premier



The Hon John Cobb MP

Federal Member for Calare

Shadow Minister for Regional Development & Water Security

Friday, 25 July 2008

FEDERATION AERONAUTIQUE INTERNATIONALE

I am honoured to provide my support of the submission being forwarded by The Bid Committee of The Gliding Federation of Australia, for the 2012 World Gliding Championships to be held at Narromine in New South Wales, Australia.

This region of New South Wales has ideal geographic and environmental features conducive to the successful conduct of high quality gliding events both for participants and spectators.

The skilled organisational capacity and structuring of events by The Gliding Federation of Australia is recognised and applauded across the globe ensuring a highly professional occasion.

For the tourist, this region has some of the most significant, interesting and well-presented historical sites, attractions and displays in Australia.

The Tourist Industry is superbly structured to accommodate and provide for visitors from all corners of the world and boasts world famous cuisine featuring quality local produce which is an acclaimed component of the western areas of New South Wales.

Australian people in the inland areas are also well known for their warm and welcoming responsiveness to tourists and add to the ambience and enjoyment that is experienced by visitors.

The conduct of the Gliding Championships in the Narromine region will produce an exceptional outcome for gliding enthusiasts and visitors and I commend the submission.

Yours sincerely,

A handwritten signature in black ink, appearing to read 'John Cobb', written over a large, stylized loop.

John Cobb MP
Federal Member for Calare



DUBBO
CITY COUNCIL

21 July 2008

Mr Ian Rogan
General Manager
Narromine Shire Council
PO Box 115
NARROMINE 2821

Dear Ian

2012 WORLD GLIDING CHAMPIONSHIP

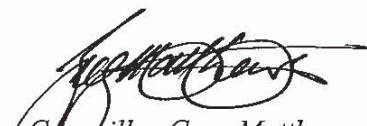
Reference is made to your letter dated 17 July 2008 regarding the proposal by an Australian bid committee for Narromine to be the site for the 2012 World Gliding Championship.


In support of Narromine Council's bid, Dubbo City Council would be pleased to offer the following points for consideration by the bid committee:

- * Located in the heart of New South Wales, and with easy access by air, road and rail, Dubbo's geographical location makes the decision easy. The City is central and accessible to and from all corners of the State.
- * Dubbo is able to sustain a large influx of visitors and it has the necessary accommodation, services and facilities to meet your specific and valued needs.
- * Dubbo is proud of its tourism attractions and its fine and varied selection of restaurants and cafes. It has something special for the history buff, the lover of culture, good food, the arts and the adventurous.
- * From the man-made tourist attractions of the Taronga Western Plains Zoo and the Old Dubbo Gaol to its surrounding, aesthetically pleasing eco-tourism, Dubbo and district will provide your participants with a feast of activities during their stay in the City.

This is an exciting opportunity for Narromine, and Dubbo City Council fully supports your bid and looks forward to involvement in this important event.

Yours faithfully


Councillor Greg Matthews
Mayor


Mark Riley
General Manager

All communications to:

THE GENERAL MANAGER PO BOX 81 CHURCH STREET DUBBO NSW 2830 T (02) 6801 4000 F (02) 6801 4259
CIVIC ADMINISTRATION BUILDING CHURCH STREET DUBBO NSW 2830 E dcc@dubbo.nsw.gov.au ABN 77 296 185 278



Dawn Fardell, MP
Independent Member for Dubbo



18 July 2008

TO WHOM IT MAY CONCERN

I wish to support the bid by Narromine to host the World Gliding Championships in 2012.

Narromine has a strong history and association with aviation and has long been recognised as a premium gliding location. The weather conditions and terrain are well suited for this occupation. Narromine is a historic town and proud of their heritage especially in the field of aviation. In July 1940, Narromine Aerodrome was handed over to the RAAF for the establishment of No.5 Elementary Flying Training School and so began Narromine's proud history with aviation which continues today. An Aviation Museum has been established at the aerodrome to recognise this history.

At the launch of the Wright Flyer by astronaut Buzz Aldrin, in 2005, 10,000 people attended demonstrating the region's interest in this field.

The City of Dubbo is in close proximity to Narromine and provides excellent services for travel, accommodation and retail business. Western Plains Zoo, which has a worldwide reputation, is located in the area along with many other tourist attractions.

I feel that Narromine would be an excellent choice for the 2012 World Gliding Championships.

Yours sincerely

Dawn Fardell MP
Member for Dubbo

Kevin Humphries MP

The Nationals Member for Barwon

THE NATIONALS

11 March 2008

Mrs Beryl Hartley
The Secretary
Narromine Gliding Club
PO Box 240
NARROMINE NSW 2821

Dear Mrs Hartley,

It gives me great pleasure to provide you with a letter of support to accompany the Narromine Gliding Club's bid to host the World Gliding Championships in 2012.

I totally support the Narromine Gliding Club's bid to host the 2012 World Gliding Championships as it would provide Narromine and District with an important and major calendar event as well as provide Narromine with huge tourism opportunities. If the Narromine Gliding Club's bid is successful it may assist in opening up opportunities through the network of promotional activities and increase the economic benefits to their region through increased visitation to rural and regional NSW. There is huge potential for major events such as the 2012 World Gliding Championships being held in rural NSW and in particular Narromine and district if the bid is successful.

I therefore have no hesitation in offering the Narromine Gliding Club my full support in their bid to host the 2012 World Gliding Championships, and wish the Club and Committee and the Narromine community all the best for the future.

Yours sincerely,



Kevin Humphries MP
Member for Barwon



Parliament House
Telephone 02 9230 3538
Facsimile 02 9230 3589

Mobile 0428 120 006
Email barwon@parliament.nsw.gov.au

Wee Waa Electorate Office
89 Rose Street Wee Waa NSW 2388
PO Box 526 Wee Waa NSW 2388

Telephone 02 6795 4163
Facsimile 02 6795 4159

Moree Electorate Office
Suite 3, Celina Court, 160 Bala Street
PO Box 958, Moree NSW 2400

Telephone 02 6752 5002
Facsimile 02 6752 6102

APPLICATION TO HOST THE FAI WORLD GLIDING CHAMPIONSHIPS 2012

APPLICANT:

The Gliding Federation of Australia

CONTACT PERSON (FOR THE APPLICANT):

Name: Henk Meertens
Email address: henk@bigpond.net.au
Phone Number: +61 2 9452 2777

NAME AND ADDRESS OF NATIONAL AERO CLUB:

Australian Sport Aviation Confederation
PO Box 3044
Batehaven, NSW 2536
Australia

PROPOSED COMPETITION DIRECTOR:

Terry Cubley
International Competition Pilot, Australian Rep IGC, Competition Director, FAI World Gliding
Championships – Gawler Australia

PROPOSED ORGANISATION OF THE EVENT:

The organising committee will be established by the Gliding Federation of Australia (GFA) through a wholly owned company structure similar to that employed for the WGC Gawler, South Australia. The event has financial sponsorship from the New South Wales Government through Events New South Wales and in-principal support from Narromine Shire and Dubbo City Council. Organisation and implementation of the organising committee structure will be immediately implemented upon the announcement of the host location for WCG2012.



1. EVENT AND YEAR

- | | | |
|-----|---------------------|-------------------------------------|
| 1.1 | Name of Competition | 32nd FAI World Gliding Championship |
| 1.2 | Year of event: | 2012 |

2. PROPOSED SITE OF THE EVENT

2.1 Name of Airfield: Narromine Aerodrome

- | | | |
|-------|-------------|--------------------|
| 2.1.1 | Coordinates | S32 13.4 E148 13.8 |
| | Elevation | 820ft ASL |

- | | | |
|-------|--------------|---|
| 2.1.2 | Nearest town | 1.5km SW Narromine, 4 000 population
32km E Dubbo, 40 000 population |
|-------|--------------|---|

2.1.3 Staff previous organisational experience

The event management group is very experienced in organising numerous state and national gliding events as well as involvement in organising the WGC at Gawler, South Australia.

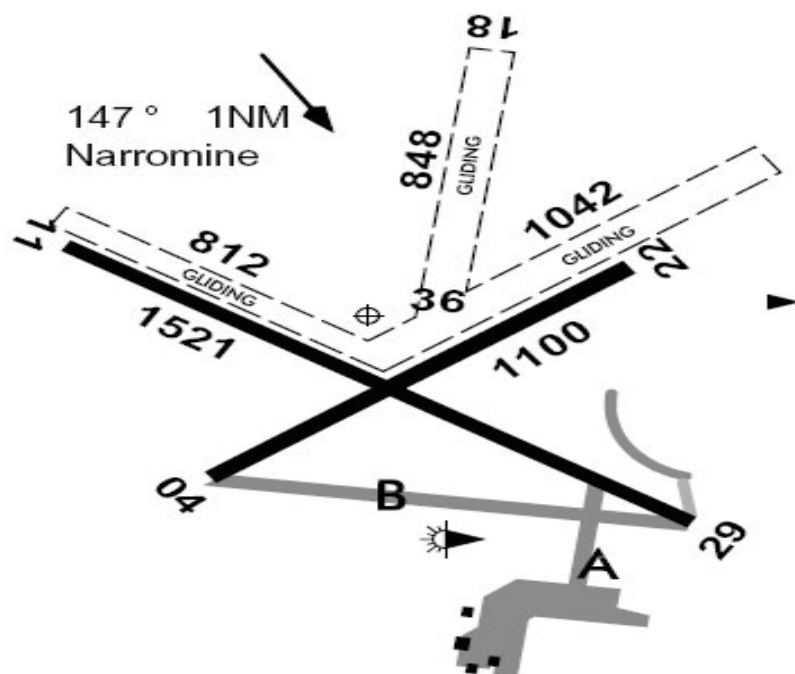
2.2 Proposed period for the event

- | | | |
|-------|------------------------|---------------------------|
| 2.2.1 | Training Dates: | 27-30 November 2012 |
| 2.2.2 | Competition Dates: | 2 - 15 December 2012 |
| 2.2.3 | Alternate Training: | 27-29 December 2012 |
| 2.2.4 | Alternate Competition: | 30 Dec 2012 - 12 Jan 2013 |



2.3 Airfield Operating Data

2.3.1 Surface of airfield, number and directions of runways



The Airport:

The airfield is on a 330ha site on the north western edge of the town and a 10 minute walk from the main business centre. Urban development in Narromine is occurring in the new subdivisions to the south and east of the town. Development in the airfield area is restricted by the Council zoning regulations. The sky park for aviation residential development is completed on the north eastern section of the airport. The Narromine Airport Users Group ensures no development has a negative impact on flight operations at Narromine.

Airspace stability:

The regional airport of Dubbo is just 20 minutes by road to the east and has 10-12 regular public transport flights per day. It is considered that the facilities and restrictions at Narromine locally will never be under threat from introduction of RPT.

Runways:

Narromine has bitumen cross strips constructed for flight training during the war years and later upgraded to operate as the alternate for Sydney International Airport until 1974. As detailed above, grass strips 11/29, 36/18 and 22/04 are dedicated glider runways with a well maintained surface launch areas. A new taxi way from the hangar area to runway 04 is 70% established at this time and will be completed in 2008/09. An additional taxi way from 04 to 11 has been created and was tested for the Natfly event at Narromine Easter 2008.

Glider Shipping:

Narromine is a familiar site for the shipping of glider containers from Europe. The organisers are well placed to use experienced firms to supply special price shipping deals and expertise to all teams to assist with shipping aircraft to Sydney. Container transfer to Narromine is managed by a local Dubbo business.

Hangarage:

There are currently two large council hangars and two large private hangars that provide short and long term hangar space. A new hangar project is now being established along the new taxi way from the hangar hard stand area to the end of runway 04. Preliminary groundwork for this project commenced in mid 2008.

2.3.2 Number of Towplanes Employed

The gliding operations at Narromine operate up to 6 tow planes on a regular basis. During championship events the organisers plan for one tug for each 7 gliders and one extra in the event of break down. Our experienced towing team led by Nick Hunt has a well development plan of operation for this airport. We have always achieved the total launch of competition aircraft for any size of event in less than 1 hour.



We have no difficulty in obtaining sufficient tow aircraft or experienced tow pilots to any gliding events at this site. Fully equipped Civil Aviation Safety Authority (CASA) approved engine and airframe maintenance facilities are located at Narromine, Dubbo and Trangie airports.

2.3.3 Meteorological facilities that will be employed

The site is well placed in the web of weather collection systems by the Bureau of Meteorology Australia. As Narromine has been a site of full time gliding since 1974, extensive weather knowledge has been gained by local forecasters. Refer to section 4.2 for more comprehensive information.

2.3.4 Parking Gliders

Ample parking is available both airside and on the public area with direct line access from the clubhouse. A complete refurbishment of the glider tie down area has resulted in the ability to tie down approximately 120 sailplanes by use of a cable system. Trailer parking is in line with the sailplanes. Water taps have been established along the lines of tie down with an underground, flush mounted water system.

A perimeter road for all runways is well marked and maintained by the local council. Designated glider operations area for parking and gridding of aircraft are also signposted. Plans are now underway for watered areas of operations at each of the launch points to provide a lawn area for aircraft launch.

2.3.5 Repair Facilities for gliders

A CASA-certified avionics business is available onsite, as well as the Club's workshop and materials facilities. CASA approved engine and airframe maintenance facilities are located at Narromine, Dubbo and Trangie airports. Approved glider repair personnel are available on site and the club maintenance building will be available for emergency repair requirements.

2.3.6 Repair facilities for radios and instruments

A CASA-certified avionics business is available onsite, as well as the Club's workshop and materials facilities. CASA-approved engine and airframe maintenance facilities are located at Narromine, Dubbo and Trangie airports

2.3.7 Oxygen requirements and supply facilities, if required

Oxygen facilities will be made available



2.3.8 What plans do you have to implement the FAI Environmental Code of Conduct during your event?

The event will have ISO 14000 accreditation. As recommended by the FAI Environmental Commission the Narromine Airfield already has an active Airfield Consultative and Coordination Committee responsible for community liaison on all activities on the aerodrome. This Committee is supportive of the bid for the WGC 2012.

2.4 Airfield Infrastructure

2.4.1 Briefing Facilities:

Pilot briefing facilities for around 200 individuals is available from the Narromine Aviation Museum conference room. The auditorium is equipped with the latest audio visual aids and presentation. The Narromine Gliding Club rooms and the Narromine Aero Club both provide catering, toilet and shower facilities, air conditioning and wireless internet with a range that extends to the tie down area. The internet wireless is targeted to host large groups of pilots and visitors. There are four wireless sites on the airport.



2.4.2 Common Rooms for the competitors

The club gliding site which extends to the cover the tie down area is free to all visiting gliding personnel.

2.4.3 Meeting Rooms for the International Jury

Existing club facilities noted above will be made available for use.

2.4.4 Press Centre

Existing club facilities noted above will be made available for use.

2.4.5 Communication and Internet Equipment

Narromine has excellent coverage from major Australian carriers such as Telstra, Optus and 3 mobile. Also the Narromine Gliding Club has a wireless broadband internet network that is capable of transmission throughout the entire tie down area.

2.4.6 *Postal and Banking:*

Narromine has a post office open from 8am-5:30pm weekdays, 5 banks and 2 financial institutions with Travelex facilities.



2.4.7 *Insurance Availability*

OAMPS Aviation Insurance acts as brokers for a number of national aviation organisations and associations including the Hang Gliding Federation of Australia and Recreational Aviation Australia Inc. With a regional head office in Forbes, less than two hours from Narromine as well as several others in New South Wales and Australia, OAMPS offers specialized coverage for gliders.

OAMPS Forbes Office

121 Lachlan Street

Forbes, NSW 2871

T: (02) 6851 1200

F: (02) 6851 4900



2.4.8 *Toilets, washrooms and shower rooms*

Available in existing club facilities

2.4.9 *Car Parking*

Vehicle parking is available for up to 1000 cars.

2.4.10 *Emergency Facilities*

Ambulance service, fire service and police stations service the airfield, with all emergency response exercises held on a regular basis at the airport.

2.4.11 *Medical and First Aid*

Narromine has three local doctors, two dentists, a new medical centre and a 30 bed hospital.

Nearby the Western Plains Medical Centre at Dubbo offers after-hours GP consultation, accident and emergency, physio and x-ray.

Dubbo Base Hospital is a level four service centre providing 24hr intensive care, in-patient, x-ray, accident & emergency and access to an orthopaedic surgeon. It has 151 beds. Dubbo Base Hospital is a trauma referral centre

for the Greater Western Health Area and the regional base for the NSW Ambulance Service.

The Royal Flying Doctor Service (RFDS) has a base in Dubbo. The RFDS is the first, largest and most comprehensive aeromedical organisation in the world. It employs a total of 203 staff, including 40 doctors, 23 nurses, six medical specialists, two dentists, 57 pilots, 25 engineers, two radio staff and various administrative and fundraising staff. Dubbo Base was established to provide increased medical coverage for patients in western New South Wales in August 1999.

2.4.12 Conference and office rooms for the OSTIV Congress, if required

There are existing auditorium facilities within the Aeroclub capable of hosting the OSTIV Conference. There are also extensive conference facilities available in Dubbo. (Refer to Appendix One for Dubbo conference facilities).

3. ACCOMMODATION AND FOOD FOR COMPETITORS

3.1 *Accommodation facilities available in the local area*

Narromine Airport:

Narromine Tourist Park Motel rooms, caravans, camping

Narromine Town:

Peppercorn Motor Inn

Stockman Motor Inn

Narromine Hotel/Motel

Imperial Stay

Abbey B & B

Commercial Hotel

Cameron Farm Stay

Hire houses within the town and district will be available through advertising in local media outlets.

Dubbo:

Dubbo has approximately 3,000 available beds. (Refer to Appendix Two for Dubbo accommodation options)

3.2 *Camping facilities at the airfield*

There is an extensive existing camping facility on site at the Aerodome

3.3 *Catering for competitors at the airfield*

Narromine Airport

- Narromine Aero club bistro
- Narromine Gliding Club café

Narromine Town

- Eight restaurants supplying local Australian and Asian style foods.
- Three sporting clubs with restaurants.
- Service club with restaurant.
- Four coffee/snack shops.

Conference and event catering companies nearby

- Christina's Catering Service
- Dubbo & Districts Catering-Dubbo
- Emoh Catering



- Griffin Catering
- Nikki's Banquet Table-Dubbo
- Red Robin Sandwich Bar
- Short Street Store Catering
- TJ Catering & Spit Roast
- Warfield Catering



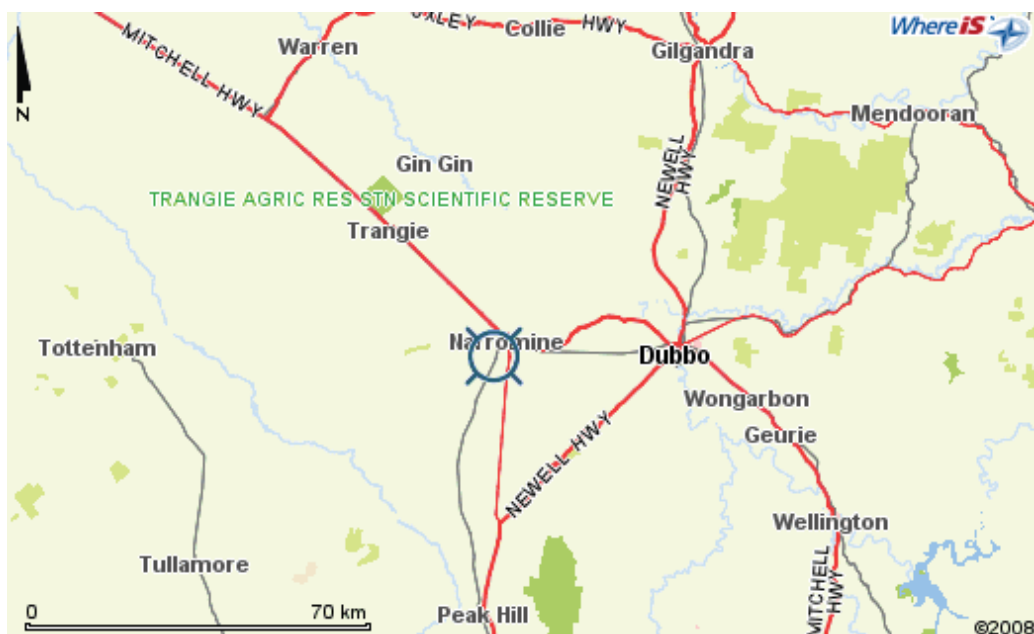
4. COMPETITION AREA



The competition area can extend beyond 300km to the north, west and south of Narromine and around 200km to the east with no airspace restrictions for glider operations.

Nearby Towns:

- Trangie- 30km
- Dubbo-38km
- Peak Hill- 60km



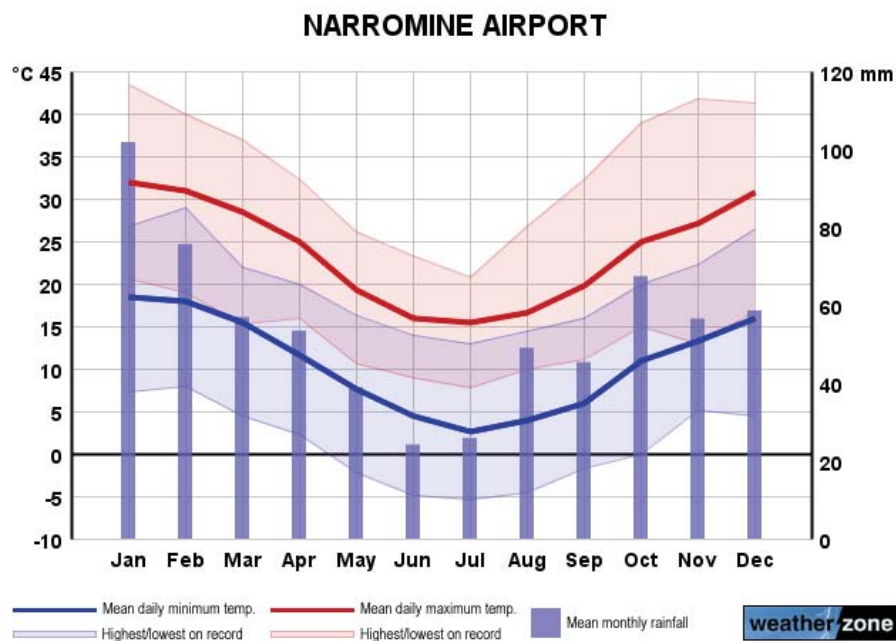
4.1 Topography

The Narromine area is slightly undulating and variations in weather for the area compliment cross country flying activities. The nature of farming in the area provides a safety bonus for both finishing aircraft and outlanding options that are unsurpassed in Australia.

4.2 Meteorological Conditions

The nearest weather recording station is in Dubbo, 38km east of Narromine. The mean maximum temperature for the proposed competition month (December) is 32.3°C and minimum is 16.8°C, falling in the middle of the Australian Summer.

Narromine Annual Temperatures & Rainfall



4.3 Airspace Restrictions in the contest area

Nil

4.4 Typical Tasks to be expected

Up to 1000km

4.5 Road and Traffic Conditions

The area is in regional Australia with minimal road traffic, with sealed roads being the majority.

5. RULES

5.1 *Options from Annex A to be used:*

5.1.1 Starting procedures

Optional start point (7.4.2 d) *or* Start line (7.4.2 b)

5.1.2 Tasks

Racing task (6.2.1) and Speed task – assigned area (6.2.2)

5.1.3 Finish procedures

Finish line (7.7.1 a)

5.1.4 Scoring

1000 points scoring system (8.1 a)

5.2 *Conditions and restrictions*

5.2.1 Pilots and Crews

Nil

5.2.2 Sailplane and equipment

Nil

5.3 *Number of Competitors*

5.3.1 Maximum number of competitors will be 130

5.3.1.1 Justification of this number of competitors

The facilities, size and layout of the aerodrome is such as to be able to cater for this number

5.3.2 Indicate how the classes will be separated for:

5.3.2.1 Starts

Through allocating optional start points for each class

5.3.2.2 On task

Through task directions and task types

5.3.2.3 Finishing and landing

The aerodrome is of sufficient size and configuration to allow for multiple landing lanes to be able to accommodate the number of aircraft

6. COSTS

6.1	Entry fee	€600
6.1.1	Services included in the entry fee	
	<ul style="list-style-type: none"> ○ Electronic (plus hard copy on request) contest area maps ○ Turn points ○ Airspace ○ Local Rules ○ Weather data and services ○ Pilot/crew ID tags ○ Briefing sheets ○ All operational services normally required 	
6.1.2	Cost of aero tows	€45
6.2	Price of car fuel per litre/gallon	AU\$1.60 (€0.91/US\$1.35)
6.3	Rental cars	AUS\$65/day (€37/US\$55)
6.4	Accommodation	
6.4.1	Hotels	From €20 per night
6.4.2	Apartments	From €150 per week
6.4.3	Bed and Breakfast	From €30 per night
6.4.4	Camping	From €5 per night
6.5	Catering	
6.5.1	Hotels	From A\$12 per dinner meal
6.5.2	Restaurants	From A\$14 per dinner meal
6.5.3	Airfield	From A\$12 per dinner meal
6.6	Provide an indicative example for the expected total costs during the contest period for a pilot with 2 crew members assuming 12 contest days and 5 official practice days:	

Entry	A\$1000
Accommodation:	$3 \times 16 \times (\text{A\$}10 - \text{A\$}50) = \text{A\$}480 - \text{A\$}2400$
Meals	$3 \times 16 \times \text{A\$}20 = \text{A\$}960$
Aerotows	$16 \times \text{A\$}70 = \text{A\$}1120$
Total Team of 3	$\text{A\$}3560 - \text{A\$}5480$
Less Event subsidy for overseas pilot	$\text{A\$}1000$
Total for Team of 3	$\text{A\\$}2560 - \text{A\\$}4480$
Cost per Person	$\text{A\\$}850 - \text{A\\$}1490 (\text{€}500 - \text{€}900)$

7. Glider Hiring

7.1	The availability of local gliders for hire	30% of fleet locally
7.2	The costs of hire	From €180 per day
7.3	Any restrictions on hire	No

8. Training

8.1 Provide details of any proposed training opportunities for teams and individuals prior to the Championships.

The airfield will be open for training prior to the event. Pilots will be able to compete in “State championships” and the “Narromine Cup” during the month leading up to the event. Narromine has a commercial operation that will provide launches and help at any time during the year prior to the event. A training event will be held in conjunction with the Australian nationals in the year prior to the event

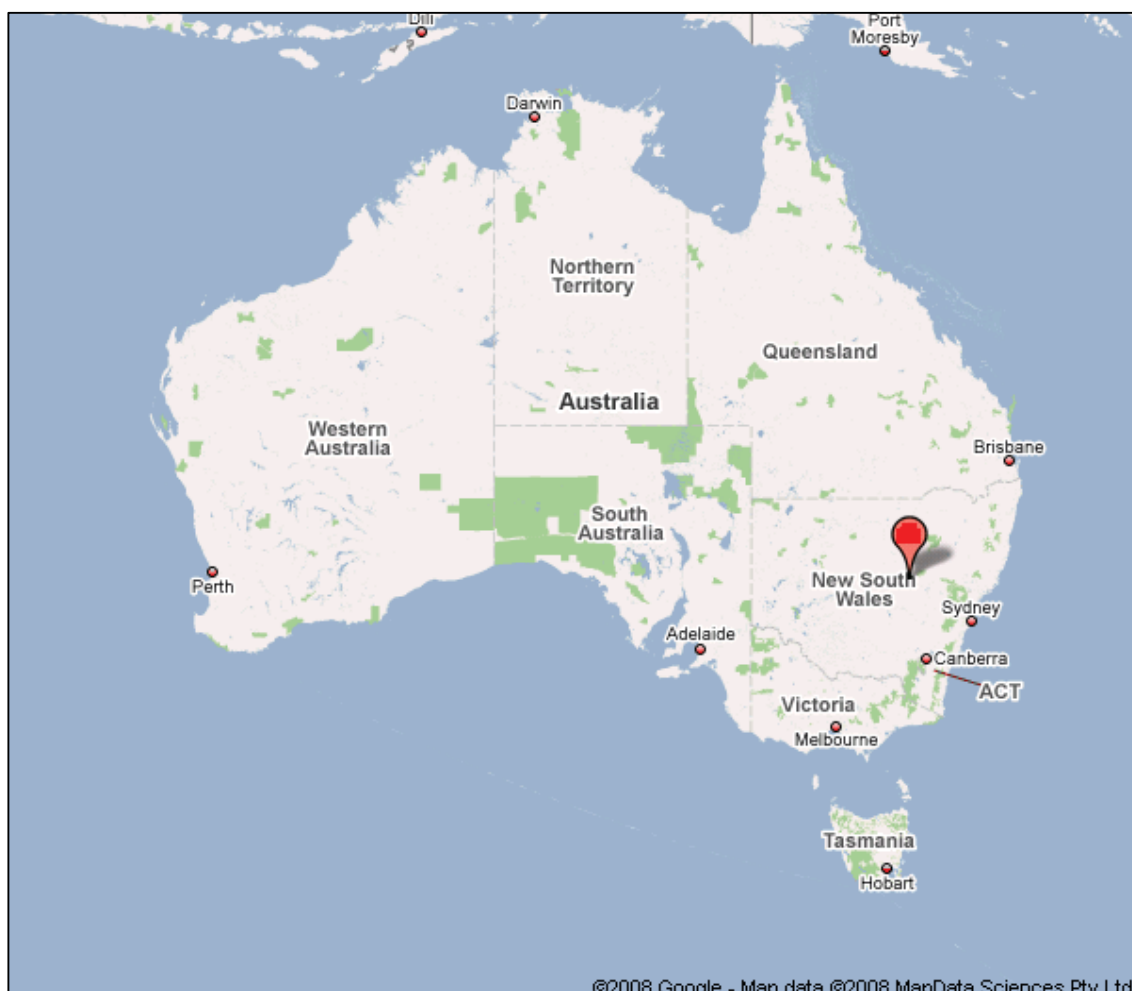
SECTION TWO
NARROMINE, NEW SOUTH WALES
GLIDING CAPITAL

NARROMINE, NEW SOUTH WALES, AUSTRALIA

Big on country hospitality, Narromine is the perfect place to visit and has a long history among aeronautical enthusiasts. This attractive country town is less than 30 minutes west of Dubbo, gateway city to regional Australia and home of a frequently serviced domestic airport.

The historic local aerodrome houses the Narromine Aviation Museum, various gliding and flying schools and clubs and a number of aviation businesses. The landscape is dotted with quaint country pubs, fabulous fishing spots along the Macquarie River and many beautiful gardens and reserves.

The fertile plains around Narromine also support thriving livestock, cotton and citrus industries. While in Narromine take time to visit the Lime Grove, Alpaca Coffee Shop and Aviation Museum.

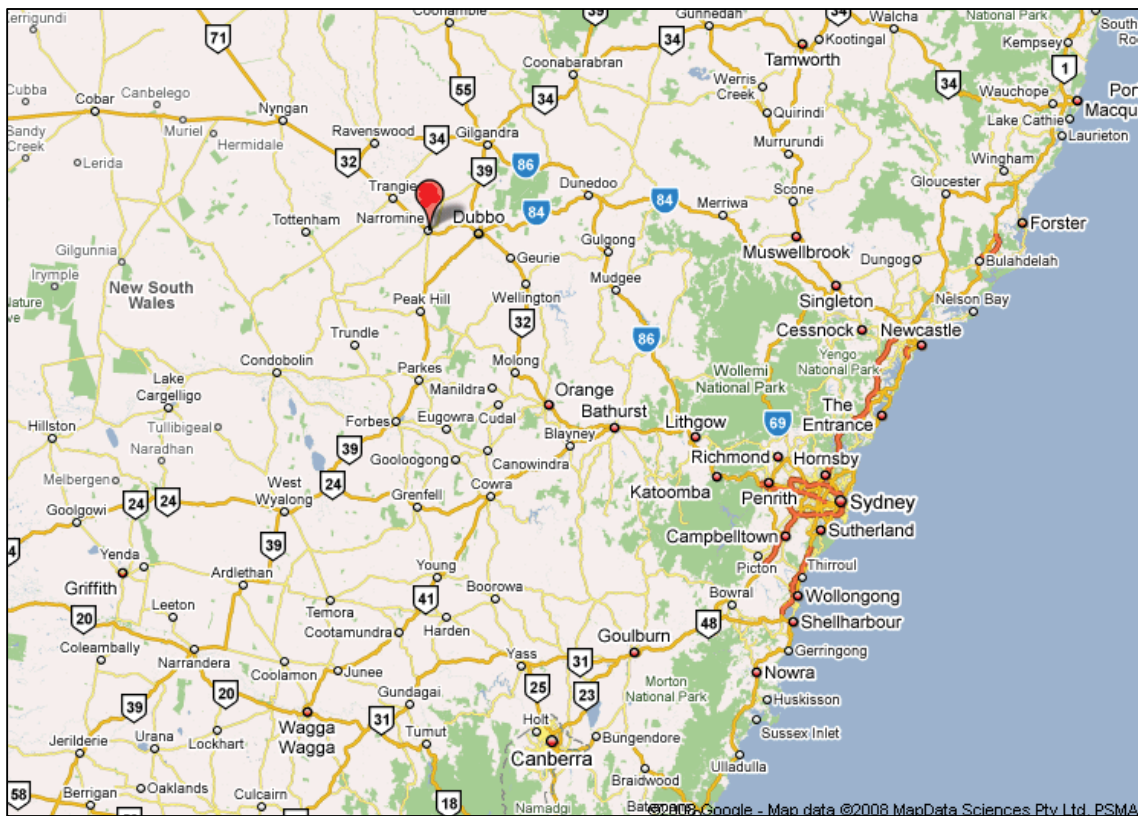


NARROMINE AVIATION

Narromine is internationally known for its fantastic thermals, which afford great gliding conditions and make it one of the three best gliding locations in the world. Each year sees hundreds of gliding enthusiasts from around the world converge on Narromine to make the most of these excellent conditions.

The historic Narromine Aerodrome is home to the oldest aero club in regional Australia, the Narromine Aviation Museum, various gliding and flying schools, as well as an array of aviation-related businesses.

Narromine has hosted 18 national and state Gliding championships. The two world gliding records set by Australian pilots were accomplished from Narromine.



Narromine airport timeline:

- The airport was first established in 1919 and is the oldest regional aero club in Australia 1929, which is still active today.
- A major training centre during World War II, during which time the two bitumen runways were constructed.
- Qantas training base until 1974. Base of the first regional airline in New South Wales, WASP airlines. A popular site for sailplanes since 1947.

- The first Australian national gliding champion Keith Collyer won this title with a flight from Narromine to Jerilderie in 1952.
- A caravan park was established on the airport in the mid 1950's in the area where the accommodation had been built during the war years. This large tree shaded park is directly behind and slightly to the east of the main club house.
- The Narromine Gliding Club founded in 1952 commenced operations in Dubbo and moved to Narromine in 1974.
- A full time gliding business Narromine Soaring Centre commenced operations at Narromine in 1975, that business continues today and currently is the only full time, year round gliding operation in Australia.
- During the period since 1964 local, state and federal government departments have financially supported projects to establish facilities for gliding events hosted at Narromine such as the ablutions block in the caravan park and the underground watering system to the tie down area. Accommodation for caravans, camping and motel type accommodation along with a large common camping kitchen are included in the park area.



- In 1992 an Airport Users Group was formed by operators on the airport to work with council and create a development plan for the future of the airport. From this plan council has identified the strength of sport aviation in Australia and has undertaken to establish Narromine Airport as a sport aviation centre of excellence. The construction of

new clubhouse for both the gliding and aero club , aviation museum, three large hangars predominately for the use of sailplanes, a residential skypark and new “sailplane specific” runways have been established under this plan. The Narromine Airport Users group meets with council each month and all business of the airport is managed through this group. Three Narromine gliding operations form the majority of flight operators on this committee.

MAJOR ANNUAL FUNCTIONS

The Narromine Gliding Club hosts “Narromine Cup” in the last full week of November each year and last year’s 11th event attracted 82 pilots. More pilots participate in this yearly gliding event in the Australian gliding calendar than any other meeting. 2008 will be the 12th year of the Narromine Cup.

In keeping with the promotion of Narromine as a sport aviation centre, the town plays host each Easter to the Recreational Aircraft Association annual fly in. This event known as Natfly attracts 600-700 aircraft each year and in excess of 1000 pilots and up to a 1000 visitors. The town has a well established catering group utilising local service clubs, local private catering stands along with the aero club and gliding club bistro and café. The event provides for catering, accommodation and tourism for 5 days over the Easter period.



INTERNATIONAL ACCESS

For international competitors attending the World Gliding Championships, Sydney is easily accessible as the international airport connecting New South Wales to the world with 39 passenger airlines operating scheduled services. Competitors and attendees from Asia, Europe, Africa, North America and South America can fly direct or one-stop flights into Sydney. Flying from Los Angeles takes half as much time to reach Sydney as Capetown, and approximately the same time as it takes to fly to Hong Kong or Rome.

Major international airlines operate direct or one stop services from major hub cities including Bangkok, Singapore, London, Los Angeles, New York, Johannesburg and Santiago. Please refer to the following pages for a list of all cities served by non-stop and direct (includes re-fuelling stop with no change of flight) flights into Sydney International Airport.



INTERNATIONAL NON STOP FLIGHTS		INTERNATIONAL DIRECT FLIGHTS		
CITY	AVERAGE WEEKLY ARRIVALS	CITY	VIA	AVERAGE WEEKLY ARRIVALS
ABU DHABI	7	BANGKOK	MELBOURNE	1
APIA	3	BEIJING	SHANGHAI	4
AUCKLAND	69	BUENOS AIRES	AUCKLAND	4
BALI	9	CHICAGO	SAN FRANCISCO	7
BANGKOK	21	DUBAI	BANGKOK	7
BEIJING	6	FRANKFURT	SINGAPORE	7
BRUNEI	3	HANOI	HO CHI MINH CITY	4
CHRISTCHURCH	43	LONDON	BANGKOK	14
DUBAI	14	LONDON	HONG KONG	7
DUNEDIN	2	LONDON	SINGAPORE	14
GUANGZHOU	7	LOS ANGELES	BRISBANE	1
HAMILTON	3	LOS ANGELES	MELBOURNE	1
HO CHI MINH CITY	3	LOS ANGELES	PAPEETE	1
HONG KONG	35	MANILA	BRISBANE	1
HONOLULU	11	MANILA	MELBOURNE	3
INCHON	14	MOSCOW	HONG KONG	1
JAKARTA	4	NEW YORK	LOS ANGELES	14
JOHANNESBURG	5	OSAKA	BRISBANE	7
KUALA LUMPUR	17	PORT MORESBY	BRISBANE	2
LOS ANGELES	9	SANTIAGO	AUCKLAND	7
MANILA	5	SHANGHAI	MELBOURNE	3
MAURITIUS	2	SINGAPORE	ADELAIDE	3
MUMBAI	3	TOKYO	CAIRNS	7
NADI	15	VANCOUVER	SAN FRANCISCO	3
NORFOLK ISLAND	4	VANCOUVER	TORONTO	5
NOUMEA	7	TOTAL		127
PALMERSTON NORTH	2	<i>Source: Sydney Airport Corporation flight data, 2007</i>		
PHUKET	3			
PORT VILLA	6			
QUEENSTOWN	4			
SAN FRANCISCO	2			
SHANGHAI	9			
SINGAPORE	21			
TAIPEI	5			
TOKYO	18			
TONGATAPU	2			
VANCOUVER	2			
WELLINGTON	26			
TOTAL	421			

ACCESS VIA SYDNEY INTERNATIONAL AIRPORT



Sydney Airport has been named the best airport in the Australia/Pacific region by Skytrax Passenger Survey¹ and maintained its status as one of the world's best airports by being ranked 7th in the latest survey of international airports². The Airport typically processes around 77,000³ domestic and international passengers per day, and is well equipped to manage fluctuations with large numbers of delegate arrivals.

Sydney Airport is only 8km from the city centre, making it one of the closest airports to the central business district in the world. The airport is linked to the city via train, bus and taxi services.

From Sydney, getting to Narromine is easy. Competitors can choose to transfer directly to Narromine via Sydney domestic terminal regional flights. There are currently 15 flights per day to Dubbo Airport, a one hour flight.

REGIONAL FLIGHT OPERATORS SYDNEY TO DUBBO		
Operator	From	# Flights per day
Air Link	Sydney to Dubbo	4
Mon-Thurs, Sun	Dubbo to Sydney	3
Regional Express (Rex)	Sydney to Dubbo	6
Mon – Sun	Dubbo to Sydney	6
Qantas Airlink	Sydney to Dubbo	5
Mon – Sun	Dubbo to Sydney	5

¹² Sydney Airport Corporate Information, 2007

² Conde Nast Traveller Magazine, 2007 [World's largest independent airport passenger survey]

³ Sydney Airport Corporation Ltd – Corporate Information, 2006

Alternately, Country Link bus and train services also operate daily services from Sydney's Central Station, a 20 minute train, bus or cab journey from the Airport.

Narromine is 38 kilometres (20-minutes by road) from the major regional city of Dubbo, which has a population of 40,000. Up to 12 flights are available each day from Sydney to Dubbo with Qantas Link, AirLink or Regional Express airlines. An express XPT train service (used by over 100,000 people each year) is also available from Sydney to Dubbo which then connects by coach to Narromine. Coach transport is available from all major cities in Australia through with a daily service.

Dubbo is a leading regional airport which attracted more than 193,000 passengers in 2007/08. Passenger numbers are expected to increase to 230,000 in the next ten years.

To be completed in December 2008, Dubbo Airport's tarmac apron extension will allow larger aircraft of up to 78 seats to utilise the airport.

An inexpensive road pickup and delivery service will be established between Dubbo and Narromine similar to current arrangements for air show events at Narromine. Pre registered taxis to Narromine booked through the Narromine aerodrome cost approximately AU\$65.



SECTION THREE

PRE AND POST TOURING OPTIONS



PRE AND POST TOURING IN REGIONAL NEW SOUTH WALES

DUBBO

Spanning the majestic Macquarie River, on the junction of three major highways, Dubbo is the commercial hub for almost a third of the state. Here, simple rural pleasures brush up against the bustling energy of dynamic inland city to forge an unforgettable holiday experience for people of all ages.

WESTERN PLAINS ZOO - Visitors can walk, ride or drive safari style through the park, and perhaps engage with the wilderness by camping over night in the Park. Home to native marsupials as well as lions, elephants, giraffes, apes and many more, the Park can be a relaxing or adventurous day trip for young and old.



BIG M DUBBO - Six attractions in one. On offer are mini putt putt golf, mind science expo, Jurassic maze, mega driving range, mazer lazer skirmish and a military museum.

BIODIVERSITY GARDEN - A replication of fauna in the region prior to European Settlement. Located next to the Shoyoen Japanese Garden.

BILL O'SHEA'S STUDIO GALLERY - Bill is a prize winning artist and recipient of a Fellowship by the Australian Institute of History and Arts. Inspect Bill's traditional style by appointment.

CLAY PAN GALLERY & CAFÉ - Formerly a wool processing factory, the Gallery now exhibits works by local and renowned artists six days a week.

SHOPPING IN DUBBO - The meeting of modern facilities with a regional country town flair. Enjoy morning tea in the traditional bakery, or walk along the streets with a cooling gelato.

DUBBO ARTS & CRAFT COTTAGE - Located in Cobra Street, the cottage displays various arts and craft works by local artists.

DUBBO GOLF CLUB - Located on the Newell Highway, this Championship course offers 27 holes for the beginner through to the experienced. Club hire is available.

DUBBO OBSERVATORY - Computerised telescope technology. A fully guided tour including informative talk and presentation available nightly. During the day navigate through Astro Mini Golf Plus.

DUNDULLIMAL HOMESTEAD - National Trust icon and Australia's oldest timber slab homestead. The "Voices from the Past" audio tour will provide insight into this early 1840s homestead.

GARLING GALLERY - Located just 13km from Dubbo on the Mitchell Highway in the village of Wongarbron. Local artist, Brett Garling, creates figurative sculptures cast in bronze.

GOLFWEST - Driving range and Augusta Challenge Minigolf. Resident professional golfer available for lessons.

JEDDA BOOMERANGS - Workshop tour and story of the boomerang. Locally owned and operated by a Kimilaroy/Wiradjuri aboriginal artist.

OLD DUBBO GAOL - Animatronic inmates, authentic displays and artefacts. Gain insight into a 1800s penal institution during a self guided day. A new hologram display tells the story of "Nosey Bob" an infamous hangman.



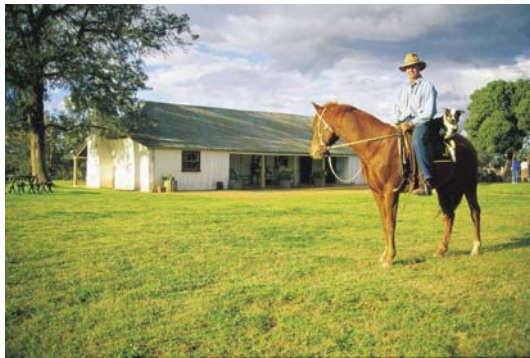
LOCAL WINE TASTING – A number of wine cellars and vineyards welcome visitors for cellar door sales and wine tasting.

SHOYON SISTER CITY GARDEN & JURIAN CEREMONIAL TEA HOUSE - Authentic Japanese horticulture gifted to the City by our sister city in Japan, Minokamo.

TRAIANTASIA - Detailed operating model railway display showing intricate detail of the landscapes along the route.

TRACKER RILEY CYCLEWAY - This 3.1km pathway, named in honour of legendary Aboriginal Tracker, Sergeant Alex Riley, leads walkers and cyclists along the banks of the Macquarie River to the Western Plains Zoo.

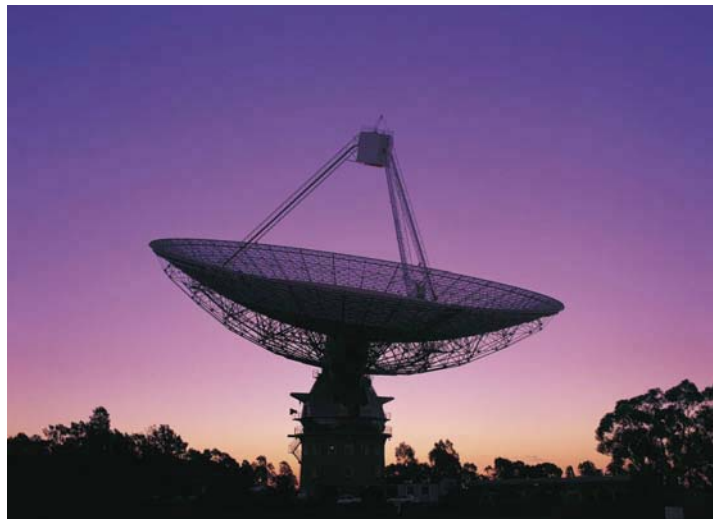
WESTERN PLAINS CULTURAL CENTRE - Dubbo's new state-of-the-art Cultural Centre houses both the City's art gallery and museum. Exhibitions include travelling displays and permanent collections.



WESTERN PLAINS RIDING CENTRE - Provides rides, lessons and extended trail rides. Located on Merrilea Road close to the City of Dubbo Turf Club.

PARKES

Scene of the movie 'The Dish', Parkes is home to operational radio telescopes, the most famous being the 64meter dish used to communicate with astronauts during the lunar landing. The Visitors Centre features interactive exhibits and displays about the telescope, with staff on hand to give tours and information regarding the Dish.



BOURKE

The expression 'Back of Bourke' is written in Australian folklore as being where the Outback starts and farming land ends. But if you expect Bourke to be a red-dirt outpost in the dust then think again. The town is neat and pretty, with beautiful buildings dating from the 1800s, and monuments like Poets Corner, which honours Henry Lawson, Will Ogilvy and Harry 'Breaker' Morant.

Bourke is also an agricultural hub, surrounded by cotton fields, citrus orchards, grape vines, and the largest jojoba plantation in the southern hemisphere.

One of the best ways to explore the local area is on the paddleboat PV Jandra. As you move quietly up the majestic Darling River you can contemplate the old days, when wool and other produce were ferried between the railhead at Bourke and the Murray-Darling junction at Wentworth.

Experience the real 'Back of Bourke', on a three-hour Mateship Country bus tour. It visits high-tech orchards and vineyards, jojoba bean plantations, cotton farms, and irrigation pump sites.

Bourke has a variety of accommodation including Motels, Hotels, Caravan Parks, Apartments, Units, Guesthouses and Farmstays.

BROKEN HILL

The unofficial capital of NSW Outback, Broken Hill is known for its isolation as well as its rich silver deposits. Mining plays an important role in the working life of Broken Hill, and its historic significance is underlined by the huge piles of crushed rock that dominate the city.

Situated 130km north-east of Broken Hill, Mutawintji is one of the State's most accessible and spectacular national parks. For thousands of years Mutawintji was one of the most important spiritual meeting places in Australia. Today visitors can learn about this site in Mutawintji National Park on a tour with an Aboriginal guide.

Groups of Aborigines came from all over the country, walking for days through spinifex-tufted semi-desert and through narrow gorges filled with river red gums and twisted mulga trees until they entered the red-rust plains.



Here they camped under the stars, built ground ovens lined with termite mounds to conduct the heat, drank from deep, cold waterholes and feasted on goanna and wallaby. You can still see many of these fireplaces today, laid out like a giant map to show where each visiting group came from.

Many Aborigines painted wallaby tracks, or made handprint stencils on rock overhangs by spitting red or yellow ochre from their mouths. Others chipped abstract designs and engravings of animals and humans on the rocks with sharpened quartz tools.

Major ceremonies and initiations took place in the sacred Snake Cave, where a giant painted brown snake winds its curls around the world. The huge, coiled snake is not for the eyes of tourists, and even today it scares Aborigines who don't have the traditional right of access.

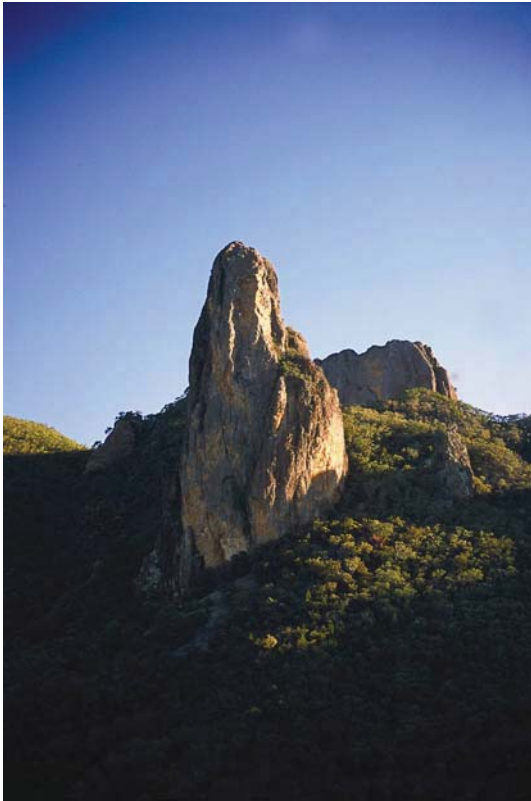
WELLINGTON



Wellington is located 362km west of Sydney (about a 4.5 hour drive) and is nestled at the foot of Mount Arthur and in the junction of the Macquarie and Bell Rivers in the picturesque Wellington Valley. Wellington is a short 30 minute drive east of Dubbo and is conveniently located in the centre of the Central West. Wellington is the perfect base when planning a trip to the Central NSW region.

Wellington is famous for the magnificent Wellington Caves. If you like to broaden your mind and see amazing phenomenon, you will find the guided Cave Tours an unforgettable experience. The complex comprises two show caves; the Cathedral Cave, the Gaden Cave and a series of smaller caves. These include the recently rediscovered Water Cave and the challenging River Cave, which are open to only the most experienced cave diving enthusiasts. The complex also includes The Phosphate mine.

WARRUMBUNGLE NATIONAL PARK



Warrumbungle National Park comprising 21,534 hectares and covering much of the Warrumbungle Range, Warrumbungle National Park contains the remnants of the extinct Warrumbungle Volcano which began its life 17 million years ago.

Warrumbungle National Park is the ideal spot for a day trip or camping holiday. Popular activities in the Park include bushwalking along 43 kilometres of walking tracks, landscape photography, rock climbing (permits required), bush picnics, bird watching and camping.

Located in the centre of the Park, the newly refurbished Warrumbungle Visitors Centre provides great opportunities to learn about the development of the Park and its Indigenous and European history. The exhibition shows how habitat and landscape play an important part in the biodiversity of the Australian landscape.

The Park contains a dramatic jumble of craggy spires, domes, vast plateaus, forested ridges, towering dykes and deep gorges. 13 million years of rain, wind and ice have eaten away at the structure revealing the skeleton of the Warrumbungle Volcano.

Sometimes referred to as 'the place where east meets west', it's here at the junction of the Warrumbungle Ranges that weather from the moist east coast and dry western plains merge, creating a special microclimate that can support both coastal and arid plants and animal life.

The Park also contains some fascinating Aboriginal history. The term 'Warrumbungles' is the Camilaroi word for 'crooked mountains'. There are several Aboriginal sites in the Park that are best seen with an Aboriginal Discovery Ranger.

SYDNEY AND SURROUNDS



Built around the attractions of a working harbour, Sydney is the thriving capital of New South Wales with a city wide population of over 4 million people⁴. Sydney has also been given titles including “World’s Favourite City”⁵ and “World’s Friendliest City”⁶ in recognition of the relaxed and welcoming lifestyle of Sydney’s resident population.

Competitors to the WGC2012 may fly into Narromine via Sydney international or domestic airports, an excellent opportunity to incorporate a tour of Sydney into the experience.

Sydney attracts visitors as the home of the Harbour Bridge, the Opera House, and Bondi Beach. Sydney is an easily accessed international gateway to once in a lifetime touring experiences. The Great Barrier Reef, the Great Sandy Desert, the Great Ocean Road; all great reasons to visit Australia for the World Gliding Championships in 2012.

⁴ Australian Bureau of Statistics 2006 Census Data

⁵ Travel and Leisure Magazine, USA, 2005

⁶ Voted by UK readers of The Sunday Times, 2003

SYDNEY HIGHLIGHTS

SYDNEY WILDLIFE WORLD – Sydney's newest attraction showcasing Australia's unique and bizarre flora and fauna right in the heart of Darling Harbour. See over 6,000 Australian animals living in nine unique habitats – koalas, wallabies, frilled-neck lizards, bilbies, taipans and much more!

SYDNEY AQUARIUM – One of the largest in the world with more than 11,500 all-Australian aquatic



animals. Walk underwater and explore Australia's rich and diverse aquatic life.

AUSTRALIAN NATIONAL MARITIME MUSEUM – Enjoy free entry to Australia's most-visited maritime museum. View thousands of exhibits depicting Australia's history. Visitors can go aboard a HMAS Vampire, the former Royal Australian Navy destroyer and see what life was like on the convict ships.

STAR CITY CASINO – Offers a range of activities including local and international entertainment shows at the Lyric theatre and Star City Showroom; and all the main casino games like Blackjack, Roulette and more.

SYDNEY HARBOUR COFFEE CRUISE – Sailing by Sydney's most famous landmarks including the Sydney



Opera House, Harbour Bridge and Fort Denison. Also includes upper reaches of Middle Harbour with natural bushland, harbour beaches and marinas.

SAILING REGATTA ON SYDNEY HARBOUR – Experience the thrill of yacht racing on world famous Sydney Harbour. With the help of an experienced skipper, practice manoeuvres or race fellow competitors on water.

POWERHOUSE MUSEUM – A showcase of unique Australian culture and history. Its unique and diverse collection of 385,000 objects spans history, science, technology, design, industry, decorative arts, music, transport and space exploration

VISIT SYDNEY OPERA HOUSE – Perform on stage with musicians from the symphony orchestra in the main concert hall or go behind-the-scenes to look at intricate sets and lavish costumes for some of the season's greatest shows. Visitors even get the opportunity to stand, baton in hand, to conduct the orchestra, a once-in-a-lifetime experience. Visitors may also attend the opera, a contemporary Australian theatrical or dance piece, a comedy show or simply enjoy a meal under the famous sails..

CLIMB SYDNEY HARBOUR BRIDGE – The world's largest steel arch bridge standing 134 metres above the harbour! Visitors can climb this world famous icon. A professional team will take you on an exhilarating climb all the way to the top! Climbs leave every 15 minutes, and for an extra thrill, you can climb at Sunset - a truly spectacular way to end the day.



TARONGA ZOO – Adults and children can both enjoy the nation's leading zoological garden, featuring Australia's finest collection of native animals and a diverse collection of exotic species, including the Great Southern Oceans exhibit, home to the only Leopard Seals in captivity.

SYDNEY SKYWALK – Skywalk is a unique high-altitude adventure on top of Sydney Tower. At 268meters (879 feet) above Sydney, Skywalk takes you on an exhilarating outdoor walk at the roof of the city, double the height of Sydney Harbor Bridge.

ABORIGINAL INSIGHTS - BOTANIC GARDENS & ART GALLERY



Experience the world's oldest living culture on a guided walking tour of the Royal Botanic Gardens, where the original inhabitants of Sydney gathered plants, seeds and roots for food and medicine. Discover how Aborigines produced a honey drink from the Banksia, roasted seeds from the Moreton Bay Chestnut and made fishing line from the bark of the

Bolwarra tree. Learn about the Dreamtime in this excellent permanent collection celebrating the diversity of indigenous arts in Australia.

SYDNEY SEAFOOD SCHOOL -Sydney Seafood School is undoubtedly the finest seafood cooking facility in Australia. This fun, hands-on class features all aspects of seafood cookery and handling, plus the



chance to make a delicious seafood dish. The School is located at Sydney Fish Market – an authentic fisherman's market on Blackwattle Bay – providing a vibrant harbour side experience. Enjoy canapés and drinks on arrival, followed by an expert seafood cookery demonstration from one of Sydney's top chefs. After the hands-on session, where you'll re-create the demonstrated recipe, it's time to enjoy your 'creation'.

VISIT THE SYDNEY OLYMPIC PARK SITE –Site of the 2000 Olympic Games, Sydney Olympic Park provides a range of activities for a full day of excitement, from bike riding through native gardens to archery and swimming, concerts, major sporting events, children's activities and annual cultural events such as the Royal Easter Show during March-April.

SHOPPING AT THE ROCKS – If trendy boutiques and quirky specialty shops are your thing, The Rocks will definitely be your favourite place! If shopping isn't your favoured activity, the Rocks is abundant with quaint pubs down cobbled laneways – take some colleagues and find your favourite.



BRONTE TO BONDI WALK – Enjoy an easy coastal walk along the Bondi to Bronte path, taking in the spectacular views of beaches, parks and aboriginal carvings. Visit a surf lifesaving museum and hear tales of heroic rescues by Bondi's own Lifesavers. Bondi Beach is popular throughout the year, with surfers and swimmers frequenting the water even during winter months and outdoor café's dotting the beach.

LEARN TO SURF



A favourite past time for many Australians, visitors can choose to take up surfing lessons at one of many reputable surfing schools up and down the East Coast of New South Wales. Surf Bondi, Many, Coogee, Palm, Maroubra or Cronulla beaches, all easily accessed via public transport from the city with boards and sunscreen provided.

EXPLORE THE NORTHERN BEACHES - From Manly to Palm Beach, the coast of the Northern suburbs reveal spectacular beaches and National Park surrounds rarely visited by tourists. Take a ferry to Manly Beach and spend a day on the Corso, an open air mall running between the two main beaches of Manly. Hire a car and drive to North Head and visit the Quarantine Station for a historical tour, or take a walk along the rugged coast line that marks the entry to Sydney Harbour.

HUNTER VALLEY WINE COUNTRY – Australia's premier wine region. Tour a large established winery and a smaller boutique vineyard with experts who explain the winemaking process from vine to bottle. Savour award-winning Hunter classics including Chardonnay, Semillon and Shiraz. Enjoy a delicious lunch, stroll through sun-kissed vineyards and learn why Hunter Valley wines are receiving worldwide acclaim.



THE BLUE MOUNTAINS – Escape the city and absorb the spectacular scenery of this majestic World Heritage listed area. Discover the Aboriginal legend of the Three Sisters - giant sandstone rock formations in the Jamison Valley. Take a cable car ride out over the valley, enjoy high tea in a quaint village café, shop for local arts and crafts, or hike through the Australian bushland.



SECTION FOUR

ADDITIONAL SUPPORT

ADDITIONAL SUPPORT



Business Events Sydney (BESydney), formerly the Sydney Convention and Visitors Bureau (SCVB) is a joint venture between government and the tourism industry and has been extremely successful in promoting and encouraging business events in Sydney and NSW for 35 years. With over 300 members representing a range of business tourism suppliers, from 5-star hotels and unique venues to professional conference organisers, we have the expertise, creativity and most of all, the experience to help deliver an outstanding event.

For further information, please visit: www.BESydney.com.au



Events New South Wales has been established by the New South Wales Government to identify, attract and nurture events which will provide significant economic and/or community benefits to Sydney and NSW.

It works to position Sydney and New South Wales as a preferred event destination by working with government and industry partners to develop existing events, attract new events and maximise the economic, strategic and community benefits of events now and in the long term.

For further information, please visit: www.eventsnewsouthwales.com.au



Business Events Australia is a dedicated unit of Tourism Australia, with a brief to position Australia as a world-class sustainable business events destination for corporate meetings, incentives, association conferences and exhibitions. Business Events Australia achieves this through global trade marketing initiatives that promote Australia's unique attributes for the sector. Business Events Australia provides meeting planners with access to a marketing tool kit to assist in marketing their next business event in Australia. The marketing tool kit can be accessed through the dedicated website businessevents.australia.com and includes tools such as downloadable videos, images, PowerPoint presentations and eCards. Available collateral includes delegate boosting broadsheet maps, Aussie dictionaries and posters.

For further information please visit: www.events.australia.com

INTERNATIONAL EVENT COORDINATOR NETWORK



A key issue for event or conference organisers is the need to be aware, and to make visitors aware, of Australia's requirement that every non-Australian travelling to

Australia must obtain a visa before starting the journey. That information is now quickly and easily available through the International Event Coordinator Network (IECN), part of Australia's Department of Immigration and Citizenship (DIAC). The IECN is a designated group of experienced immigration employees who provide visa information to event organisers and their visitors. DIAC encourages event organisers to contact the nearest IECN as early as possible to ensure problem-free visa arrangements for visitors and participants.

For further information please visit: www.immi.gov.au/business/iecn.htm



Business Events Sydney will, on behalf of your association, approach their key partner airline Qantas to seek support of the championships. Qantas is Australia's leading domestic airline, and is part of the oneworld alliance, which has established itself as the most global of the world's airline alliances over the past few years. Now comprising ten of the world's leading airlines - Qantas, American

Airlines, British Airways, Cathay Pacific, Finnair, Iberia and Lan Airlines, Japan Airlines, Malev Hungarian Airlines, Royal Jordanian - oneworld provides services to 571 destinations in 135 countries. For further information please visit: <http://www.qantas.com.au/>

APPENDIX ONE

DUBBO CONFERENCE FACILITIES

CONFERENCE VENUE DIRECTORY

Index	Property Name	No. of Rooms	Theatre	Class Room	Banquet	Cocktail	Tiered
1	Airport Meeting Room	1		15-20			
2	Amaroo Hotel	1	35	25	35	50	
3	Apex Oval Function Room 1 Bruce Neads Memorial Grandstand	1	80	80	80	80	
4	Aussie Cabins	1	80	60	60	90	
5	Cascades Motor Inn	4		115	140	235	
6	Cattleman's Country Motor Inn	3	100	50	80	100	
7	City of Dubbo Turf Club	3		80	100	400	
8	Country Comfort Ashwood Resort	4	175	75	150	200	
9	Dubbo City Golf Club	3	220	100	220	400	
10	Dubbo Civic Centre	3	800	400	560	950	
11	Dubbo Railway Bowling Club	2		50	40	70	
12	Dubbo RSL Club Resort	7	700	400	450	750	x
13	Dubbo Sportsworld	1	750	750	750	750	
14	Expo Function Centre	1	500		200		
15	Lazy River Estate	3	200	160	200	250	
16	Mainstay Motor Lodge	4	100	55	70	100	
17	Matilda Motor Inn	1	35	25	36	50	
18	Macquarie Inn	2	100	70	200	400	
19	Carlton House OEC Function Centre	4	80	50	60		
20	Parklands Lodge	2	120	80	100	130	
21	Raine & Horne	1	50	29	25	60	
22	Savannah Function Centre – Western Plains Zoo	3	180	120	200	250	
23	Tony McGrane Room Orana Mall	1	100	70	100	150	
24	West Dubbo Bowling Club	1		100	150	200	
25	Western Plains Cultural Centre	9	60	60		60	
26	Community & School Halls						

1. AIRPORT MEETING ROOM

Address: Mitchell Highway, Dubbo

Phone: 02 6801 4000

Facilities and Amenities:

Located in the Dubbo Terminal. Available seven days per week from 7:00am till 7:00pm or by prior arrangement. Features include overhead multimedia projector, tv/dvd and electronic whiteboard.

Meeting Room	Theatre	Classroom	Banquet	Cocktails
Airport meeting room		15-20		

2. AMAROO HOTEL

Address: 81 Macquarie Street, Dubbo

Phone: 02 6882 3533

Fax: 02 6884 2601

Email: amaroohotel@bigpond.com

Facilities and Amenities:

Located in the main street of Dubbo. All catering is provided and available in-house to accommodate conference requirements.

The Amaroo Hotel has a meeting room on the first floor, which can accommodate up to 35 people theatre style. It also has a function area located downstairs which can accommodate up to 150 people.

Meeting Room	Theatre	Classroom	Banquet	Cocktails
Amaroo 1 st Floor	35	25	35	50

3. APEX OVAL FUNCTION ROOM 1 – BRUCE NEADS MEMORIAL GRANDSTAND

Address: Apex Oval
Cobra Street, Dubbo

Phone: 02 6801 4000

Email: dcc@dubbo.nsw.gov.au

Facilities and Amenities:

The function centre can be configured to cater for up to 80 people and is suitable for corporate functions, conferences and dinner parties.

Technical facilities include slide and overhead projectors, screens, flipcharts, whiteboards, electronic data projector.

Kitchen and bar facilities are available.

Meeting Room	Theatre Style	Class Room	Banquet	Cocktails
Function Room 1	80	80	80	80

4. AUSSIE CABINS

Address: Sheraton Road, Dubbo
Phone: 02 6884 9504
Fax: 02 6884 4599
Email: aussie_cabins@hotmail.com
Website: www.aussiecabins.com

Facilities and Amenities:

Aussie Cabins provides low-cost accommodation with a series of red cedar cabin-style, air-conditioned rooms accommodating up to six guests per standard cabin complimented with self-contained cabins sleeping up to five guests with linen provided.

The Grevillea Room has the capacity to accommodate 90 guests. The area is surrounded by wide verandahs overlooking serene bird filled native gardens which incorporates a large BBQ and entertaining courtyard.

Television, DVD, VCR, overhead projector screen, whiteboard and markers and audio system on application are complimentary. Full catering service is available.

In ground solar heated salt water pool & entertaining deck within complex available for guests use at own leisure.

Meeting Room	Theatre	Theatre + tables	Classroom	U-Shape	Banquet	Cocktails
Grevillea Room	80	42	50	60	60	90

5. CASCADES MOTOR INN

Address: 141 Cobra Street, Dubbo
Phone: 02 6882 3888
Fax: 02 6882 0906
Email: cascades@tpg.com.au
Website: www.cascadesmotorinn.com.au

Facilities and Amenities:

The ground floor function centre can be configured to cater for 2 to 200 people and is suitable for corporate functions, conferences and dinner parties.

Technical facilities include slide and overhead projectors, screens, flipcharts, whiteboards, PA system, television and video players, DVD player, portable stage, fully adjustable lighting. We can arrange Multi-media projector, lap top, video conferencing facilities and electronic whiteboards. Wireless internet available to conference rooms.

Meeting Room	Class Room	Banquet	Cocktails
Champagne	45	50	100
Churchill	25	30	40
Crown	25	35	55
Celebrity & Cascade	20	25	40
Total	115	140	235

6. CATTLEMAN'S CONFERENCE CENTRE

Address: Cattleman's Country Motor Inn
8 Whylandra Street, Dubbo
Phone: 02 6884 5222
Fax: 02 6884 5299
Email: motel@hwy.com.au
Website: www.cattlemans.com.au

Facilities and Amenities:

The Cattleman's Conference Centre offers the following facilities

- Three well appointed and tastefully decorated conference rooms, catering for up to 240 people.
- A full range of equipment is available, including data projectors, electronic whiteboards, and what is not here we can source for you.
- An award - winning restaurant, which providing catering for your event.
- A conference & functions coordinator, with professional experience to provide you with advise and assistance in the planning and delivery of your event.
- Over 85 tastefully decorated and well - appointed rooms all rated at 4 ½ stars.
- Natasha Amos, Functions Coordinator 02 6884 5222

Meeting Room	Theatre	U-shape	Classroom
Outback Room	100	50	50
Country Room	30	16	16
Cattleman's Room	100	40	40

7. CITY OF DUBBO TURF CLUB

Address: Merrilea Road, Dubbo
Phone: 02 6882 1044
Fax: 02 6884 1357
Email: dubturf@hwy.com.au

Facilities and Amenities:

The venue is available for hire most days of the year, except for race days.

Three options are available:

Lounge Bar	Up to 80 people
Palm Court	Up to 100 people
Undercover Betting Ring	Up to 400 people

It is also possible to use a marquee, however the betting ring is mostly used in preference to this.

The club provides full bar facilities at hotel prices with a wide variety of wines and beer. Arrangements can be made for the bar to be on account with an upfront payment prior to the function or on a cash basis.

Various catering alternatives can be discussed at time of booking.

Any extra items, such as tablecloths, dance floor, extra crockery/cutlery etc. which may have to be hired would be at your cost.

8. COUNTRY COMFORT ASHWOOD RESORT

Address: Cnr Newell Highway & East Street, Dubbo
Phone: 02 6881 8700
Fax: 02 6881 8930
Email: ashwooddubbo@bigpond.com
Website: www.ashwoodresort.com.au

Facilities and Amenities:

Technical support includes PA system, tape recorders, slide projectors, overhead projectors, screens, whiteboards, flipcharts, video projector, video players and televisions, lecterns, portable stage, special lighting and photography facilities.

Meeting Room	Theatre Style	U-shape	Banquet	Cocktails
Lobby	-	-	-	-
Begonia	20	10	10	30
Camellia	75	30	40	75
Magnolia	100	50	90	115
Combined	175	75	130	

9. DUBBO GOLF CLUB

Address: Newell Highway, Dubbo
Phone: 02 6882 1255
Fax: 02 6884 2743
Email: function.manager@dubbogolfclub.com.au
Website: www.dubbogolf.com.au

Facilities and Amenities:

The Dubbo Golf Club offers conference facilities for up to 200 people. For further information and floor plan details contact the Club Office.

Technical support includes Overhead projector, screen, video conferencing facilities, phone conferencing facilities, catering, television/video and whiteboard.

Dubbo Golf Club has a 27 hole Championship course. Social play is available seven days per week. Visitors are welcome.

The Club's Fairway's restaurant provides al-la-carte options.

Name of Room	Configuration	Capacity
1. Fairways	Classroom	100
	Cocktail	400
	Banquet	220
2.	Classroom	30
	Theatre	60
	U Shape	30
3.	Classroom	40
	Theatre	60
	U Shape	30

10. DUBBO CIVIC CENTRE

Address: Darling Street, Dubbo
Phone: 02 6801 4410
Fax: 02 6801 4419
Email: dcc@dubbo.nsw.gov.au

Facilities and Amenities:

The Dubbo War Memorial Civic Centre caters for 10 to 1000 people and gains from the fact that it is essentially a flat floor multi-purpose hall.

Its use as a convention centre, theatre, concert venue, wedding reception venue, church or a school facility demonstrates this Centre's versatility.

Meeting Room	Theatre Style	Class Room	Banquet
Macquarie	800	400	560
Macquarie West	300	160	220
Macquarie East	400	240	340
Oxley	120	60	112

11: DUBBO RAILWAY BOWLING CLUB

Address: 101 Erskine Street, Dubbo
Phone: 02 6884 2044
Fax: 02 6884 1585
Email: admin@rbcdubbo.com
Web: www.dubborailwaybowlingclub.com.au

Facilities and Amenities:

The Dubbo Railway Bowling Club provides one conference room free of charge, with charges for refreshments and meals only.

A choice of the Club's "all you can eat" restaurant or catering is available. Facilities include television, VCR, overhead projector and whiteboard.

	Theatre	Classroom	Banquet	Cocktail
Conference Room	70	50	50	70

12. DUBBO RSL CLUB RESORT

Address: Cnr Wingewarra & Brisbane Streets, Dubbo
Phone: 02 6882 4411
Fax: 02 6881 8062
Email: function_rsl@dubborsl.com.au
Website: www.dubborsl.com.au

Facilities and Amenities:

Dubbo RSL Club Resort offers many venues, with the availability of modern equipment and technical services. Meetings arranged, conventions organised, food and beverages catered for.

The newly refurbished Theatrette boasts tiered seating for 342, state-of-the-art audio-visual equipment, acoustics and lighting, new stage and is an ideal venue for conferences or live entertainment.

Technical facilities include TV/video, slide projector, overhead projector, whiteboard, flipchart, pinboards, multi media projector, internet access, photocopying, faxes, pens, paper, water & mints.

Helen Piper, Functions co-ordinator 02 6882 4411.

Meeting Room	Theatre Style	Class Room	Banquet	Cocktails
Auditorium	700	400	450	yes
Board Room	-	12-15	-	-
Starlite One	30	-	-	yes
Starlite Two	40	20	-	yes
Starlite Three	40	20	-	yes
Any two starlite rooms	80	50	80	yes
Starlites 1,2&3	150	100	120	yes
Starlite Terrace	-	-	100	yes
Jacaranda	80	50	50	yes
Rendezvous Restaurant	-	-	80	Yes
Round Room	50	-	-	-
Theatrette	342	-	-	-

13: DUBBO SPORTSWORLD

Address: Sheraton Road, Dubbo
Phone: 02 6884 0505
Fax: 02 6884 0130
Mobile: 0428 840 506
Email: costello6@bigpond.com

Facilities and Amenities:

Facilities include catering, television/Video, television/DVD, Whiteboard. Can arrange Multi-media Projector, Overhead Projector, Screen, Lap Top, Video Conferencing Facilities, Phone Conferencing Facilities.

Theatre Style	Class Room	Banquet	Cocktails
750	750	750	750

14: EXPO FUNCTION CENTRE

Address: Dubbo Showground
Cnr Fitzroy & Wingewarra Streets, Dubbo
Phone: 02 6801 4570
Fax: 02 6801 4579
Email: showground@dubbo.nsw.gov.au

Facilities and Amenities:

Centrally located in the Dubbo Showgrounds, the Expo Centre offers you all the features facilities such as ground level, ample parking, air-conditioning, heating, fully licensed bar, commercial kitchen, whiteboards, 36 power outlets, eight amplification points, two ceiling three-phase points.

Meeting Room	Theatre Style	Class Room	Banquet	Cocktails
Room A	450	160	300	450
Room B	150	40	100	150
Room C	30	15	12	30

15: LAZY RIVER ESTATE

Address: 29R Old Dubbo Road, Dubbo
Phone: 02 6882 2111
Mobile: 0437 850 717
Email: events@lazyriverestate.com.au

Facilities and Amenities:

The reception room within the Cellar Door is able to cater for a maximum of 160 guests. Lazy River is offers the following inclusions:

- An events co-ordinator with professional experience to provide you with advice and assistance in planning and delivery of your event.
- Overhead projector; Screen; Slider Projector; Television; VHA Video Player; Cordless Microphone; Audio Tape Deck; Lectern.
- Paper, pens, water & mints for Boardroom style events.
- Menus to suit specific dietary requirements and allergies.

Meeting Room	Theatre	Boardroom	U-Shape	Cocktail	Reception/ Dinner
Club 100 Room	-	12	-	-	-
Dulhunty Room	70	50	40	-	-
Café	-	-	-	-	60
Cellar Door Entirety	150	-	-	-	160
Outdoor Decking	-	-	-	100	80

16. MAINSTAY MOTOR LODGE

Address: Newell Highway, Dubbo
Phone: 02 6882 4777
Fax: 02 6881 8370

Facilities and Amenities:

Located next door to the Dubbo Golf Course and in close proximity to the Western Plains Zoo. The Lodge is only 2km from the City centre and 3km from the airport. Facilities include natural light, choice of fresh air or air conditioning, whiteboard/flipchart, microphone/PA system, secretarial services, lectern, video/television, projector and screen, telephone, facsimile, photocopying, postal facilities and courier service.

Meeting Room	Theatre	Class Room	Cocktail	Banquet
Squatters	100	55	100	70
Pioneer	35	20	35	20
Shearers	30	20	30	20
9 th hole	25		40	15

17. MATILDA MOTOR INN

Address: 231 Darling Street, Dubbo
Phone: 02 6882 3944
Fax: 02 6884 3592
Email: matilda@crt.net.au
Website: www.wheretostay.com.au/matilda-dubbo

Facilities and Amenities:

Located in the heart of Dubbo, delegates will find both the Dubbo RSL Club Resort and main shopping area within a comfortable walk. All catering is provided and available in-house to accommodate conference requirements.

Meeting facilities include a round boardroom table capable of seating 18 persons, television, video, overhead projector, slide projector and both a standard and electronic whiteboard.

Meeting Room	Theatre	Class Room	Banquet	Cocktails
Coolabah Room	35	25	36	50

18. MACQUARIE INN -DUBBO

Address: Cnr Wheelers Lane & Birch Ave, Dubbo
Phone: 02 6884 1955
Fax: 02 6882 8420
Email: macquarieinn@alhgroup.com.au

Facilities and Amenities:

The Macquarie Inn has on offer one conference room. It comfortably seats up to 200 people banquet style, 70 classroom, 100 theatre and 400 cocktail.

An extensive range of equipment is provided including lecterns, videos, whiteboards, projectors and internet access.

Catering is also available.

Name of Room	Theatre	Classroom	Banquet	Cocktail
Room 1	100	70	200	400

19. CARLTON HOUSE – OEC FUNCTION CENTRE

Address: 212 Darling Street
Phone: 02 6882 5655
Fax: 02 6884 4991
Email: function.centre@oec.org.au
Website: www.oec.org.au

Facilities and Amenities:

The Centre caters for up to 80 people in a variety of situations – conferences, corporate functions, business presentations, meetings and social gatherings. An IT specific room is available for your training needs.

Facilities include two tastefully decorated heritage style rooms or two more traditional conference rooms with modern décor. During breaks guests can spread out to take advantage of the spacious verandahs and garden areas.

A choice of various styles of catering is also available to enhance your visit.

An extensive range of equipment is provided including lecterns, videos, electronic whiteboards, projectors and internet access.

Disabled facilities and access.

Name of Room	U Shape	Theatre Style	Boardroom Style	Classroom Style	Dining Table (10 to table)
Heritage Style					
Willoughby	27	80	35	50	60
Gleeson	21	45	26	20	40
Contemporary Style					
Doolan Room	24	48	24	24	40
Flint Room	-	-	14	7	-
Harrison Room	27	45	26	27	40

20. PARKLANDS LODGE

Address: Dubbo Cabin & Caravan Parklands
 Newell Highway
 PO Box 6105
 Dubbo NSW 2830
Phone: 02 6884 8633
Fax: 02 6884 8341
Email: parkland@tpgi.com.au
Website: www.dubboparkland.com.au

Facilities and Amenities:

The Dubbo Cabin and Caravan Parklands offers conferencing, workshop and accommodation facilities including catering for up to 130 guests.

Television, VCR, overhead projector and screen, whiteboards are available.

The large private lawn area with amphitheatre is suitable for school groups, breakout conference groups and outdoor demonstrators.

A variety of accommodation options are available on site, ranging from budget bunk style lodge accommodation to executive spa cabins.

21. RAINE & HORNE

Address: Cnr Cobra & Macquarie Streets, Dubbo
Phone: 02 6882 1755
Fax: 02 6884 2229
Email: sales@rhdubbo.com.au
Website: www.rhdubbo.com.au

Facilities and Amenities:

- Multimedia Projector
- Video and television on large 3m screen
- PA System
- Whiteboard
- Special lighting
- Stage or lectern

Theatre style	50
Banquet	25
Class Room	29
Cocktail	60

22. SAVANNAH FUNCTION CENTRE

Address: Western Plains Zoo
Obley Road, Dubbo
Phone: 02 6881 1488
Fax: 02 6884 7693
Email: sthompson@zoo.nsw.gov.au
Website: www.zoo.nsw.gov.au

Facilities and Amenities:

Technical facilities include Overhead projector, screen, television/DVD, television/video, whiteboard, flip charts. Can arrange Multi-media projector & cordless microphone. Catering is also available.

Meeting Room	Theatre Style	Class Room	U-shape	Banquet	Cocktails
Savannah	150	120	50	200	250

Ibis	50	35	30	-	-
Zoo Friends	25	15	20	-	-

23. TONY MCGRANE ROOM

Address: Orana Mall,
Cobra Street, Dubbo
Phone: 02 6882 7766
Fax: 02 6882 5912
Email: oranamall@bigpond.com.

Facilities and Amenities:

The first floor function centre can be configured to cater for up to 150 people and is suitable for corporate functions, conferences and dinner parties.

Technical facilities include whiteboards, television, DVD, video player and computer outlets.

Kitchen facilities are available.

Meeting Room	Theatre Style	Class Room	Banquet	Cocktails
Tony McGrane Room	100	70	100	150

24. WEST DUBBO BOWLING CLUB

Address: 82 Whylandra Street, Dubbo
Phone: 02 6884 3000
Fax: 02 6884 2396
Email: westbowl@bigpond.net.au
Website: www.westdubbobowlingclub.com.au

Facilities and Amenities:

The West Dubbo Bowling Club is located within walking distance of several motels and overlooks the Macquarie River and parklands.

Conference equipment available includes a PA system, Lectern, Whiteboard, Flip Chart, Overhead Projectors & Screens, and TV/Video.

The club has three rooms that can accommodate up to 220 people banquet style.

The Club's Bistro seats 270 people and the outdoor terrace seats 70 people overlooking the Macquarie River & Dubbo. The Bistro is open for lunch & dinner daily, breakfast can be arranged for groups.

25. WESTERN PLAINS CULTURAL CENTRE

Address: 76 Wingewarra Street, Dubbo
Phone: 02 6801 4444
Fax: 02 6801 4449
Email: linda.delbao@dubbo.nsw.gov.au
Website: www.wpccdubbo.org.au

Facilities and Amenities:

Brand new state-of-the-Art facility. Equipment available projection screen, whiteboards, lectern and microphone. Can arrange Multi-media projector, Overhead projector, television/DVD, television/video. Meeting rooms have kitchen facilities and catering is available through the Outlook Café. Ample parking available.

Meeting Room	Class Room	Banquet	Cocktails
Auditorium	60		60
Meeting rooms (5)	15-25		
Dark Room			
Studio space			

26. COMMUNITY AND SCHOOL HALLS

Address: Dubbo Neighbourhood Centre
213 Brisbane Street, Dubbo
Phone: 02 6882 2100
Fax: 02 6884 3994
Email: infoednc.org.au

For information on Community and School Hall hire contact the Dubbo Neighbourhood Centre.



Dubbo Visitors Centre & Events Bureau
Cnr Macquarie Street & Newell Highway
Dubbo NSW 2830

T: (02) 6801 4450
F: (02) 6801 4459
E: tourism@dubbo.nsw.gov.au
W: www.dubbotourism.com.au

Open 7 days - 9am to 5pm

APPENDIX TWO

DUBBO ACCOMMODATION SERVICES

DUBBO ACCOMMODATION GUIDE

Proudly brought to you by the Dubbo Visitors Centre & Events Bureau

MOTELS

AAAT	Name of Property	Address	Telephone	Indicative Single	Indicative Double	Extra Person	Restaurant	Self Contained Available
1	**** Cattleman's Country Motor Inn	8 Whylandra Street	6884 5222 1800 068 110	\$95-\$125	\$95-\$125	\$15	Yes	
2	**** Abel Tasman Motor Inn	135 Whylandra Street	6885 2555 1800 209 992	\$95-\$125	\$109-\$149	\$10		
3	**** Akuna Motor Inn	Whylandra Street	6885 4422	\$99-\$110	\$115	\$15	Meals to unit	Yes
4	**** De Russie Boutique Hotel	95 Cobra Street	6882 7888 1800 060 112	\$120-\$135	\$120-\$135	\$15	Yes	
5	**** Dubbo RSL Club Motel	Cnr Brisbane & Wingewarra Sts	6884 9099	\$125-\$181	\$125-\$181	\$16	Yes	
6	**** Endeavour Court Motor Inn	Cnr Bourke & Macleay Streets	6881 1000 1800 081 100	\$105	\$105-\$116	\$12		
7	**** Green Gables Motel	134 Bourke Street	6882 5588	\$55-\$83	\$66-\$94	\$12-\$20	Meals to Unit	Yes
8	**** Australian Heritage Motor Inn	Cnr Cobra & Brisbane Streets	6884 1188	\$118	\$118	\$10	Yes	Yes
9	**** Aberdeen Motor Inn	25 Cobra Street	6884 1700	\$90-\$94	\$95-\$99	\$12	Meals to Unit	
10	**** Atlas Motel	140 Bourke Street	6882 7244 1800 024 972	\$70-\$95	\$80-\$95	\$10-\$12	Meals to Unit	
11	**** Countryman Motor Inn	47 Cobra Street	6882 7422	\$115-\$134	\$127-\$146	\$15-\$22	Yes & meals to unit	Yes
12	**** Best Western Blue Diamond Motor Inn	113 Wingewarra Street	6882 0666 1800 027 236	\$102-\$122	\$102-\$122	\$15	Meals to unit	
13	**** Blue Gum Motor Inn	109 Cobra Street	6882 0900 1800 027 247	\$74-\$95	\$85-\$107	\$12	Med to unit	
14	**** Cascades Motor Inn	147 Cobra Street	6882 3888	\$80-\$90	\$85-\$106	\$5-\$15	Yes	
15	**** Comfort Inn Blue Lagoon	79-81 Cobra Street	6882 4444 1800 027 901	\$80 - \$110	\$85 - \$120	\$10 each	Yes	
16	**** Comfort Inn Dubbo City	57Cobra Street	6882 7033 1800 665 737	\$89-\$99	\$95-\$110	\$15	Meals to Unit	
17	**** Country Comfort Ashwood Resort	Cnr Newell Highway & East Streets	6881 8700 1300 650 464	\$88-\$93	\$93-\$100	\$10	Yes	
18	**** Country Leisure Motor Inn	86 Cobra Street	6882 3988	\$77	\$77	\$15	Meals to unit	
19	**** Dubbo Mainstay Motor Lodge	Newell Highway	6882 4777	\$60-\$110	\$75-\$120	\$10 Units - \$126	Yes	Yes
20	**** Forest Lodge Motor Inn	Cnr Wheelers lane & Myall Street	6882 6500	\$66-\$81	\$79-\$91	\$10	Yes	
21	**** Golden West Motor Inn	87 Cobra Street	6882 2822 1800 677 832	From \$85-\$95	From \$89-\$99	\$15	Yes	
22	**** Macquarie Inn Hotel Motel	Cnr Wheelers Lane & Birch Ave	6882 9044	\$96-\$106	\$106-\$116	A\$21/C\$10	Yes	Yes
23	**** Palms Motor Inn	35 Cobra Street	6881 8155 1800 688 686	\$80-\$90	\$90-\$100	\$10	Meals to unit	
24	**** Shearing Shed Motor Inn	31 Cobra Street	6884 2977	\$80-\$90	\$90-\$100	\$10	Meals to unit	
25	**** Tallaroak Motor Inn	17 Stonehaven Ave	6882 7066	\$68-\$78	\$78-\$88	\$10		Full Kitchens

26	****	The Homestead Motel	101 Cobra Street	6882 4944	\$65-\$75	\$72-\$82	\$11	Meals to unit	
27	***	Across Country Motor Inn	Cnr Newell Hwy & Baird Street	6882 0877	\$60-\$70	\$75-\$85	\$10	Meals to unit	Yes
28	***	All Seasons Motor Lodge	78 Whylandra Street	6882 6377	\$80-\$90	\$80-\$110	\$15		Units \$130-\$150
29	***	Dubbo Centre Point Motel	146 Bourke Street	6882 7644	\$56-\$90	\$64-\$100	\$12		
30	***	Fountain View Motel	113-115 Cobra Street	6882 9777	\$78-\$88	\$85-\$95	\$10	Meals to Unit	
31	***	Matilda Motor Inn	231 Darling Street	6882 3944	\$57-\$90	\$62-\$98	A\$11/C\$7	Yes	Yes
32	***	Park Vue Motel	131 Bourke Street	6882 4253	\$50-\$55	\$55-\$70	\$10		
33	**	Hotel Formule 1 Dubbo	Cnr Newell & Mitchell H'ways	6882 9211	\$55	From \$55	Family: \$75	Breakfast Room	
34	*	Westside Hotel Motel	Cnr Newell & Mitchell H'ways	6882 3500	\$49	\$55 Twin \$60	\$11	Yes	

CARAVAN PARKS & CAMPING

AAAT	Property	Address	Phone	Van	Std Cabin	Ensuite Cabin	Tent site	Power Site	
35	*****	Big 4 Dubbo Parklands	6884 8633 1800 033 072			From \$110	From \$25	From \$28	Dormitory (min 30) From \$28pp
36	*****	Dubbo City Caravan Park	6882 4820 1800 824 820		\$55-\$69	\$68-\$125	\$18-\$20	\$24-\$28	Motel \$85-\$110
37	****	Midstate Motor Park	6882 1155	\$35-\$45		\$55-\$95	\$19	\$21	Self Contained Units \$65-\$75
38	****	Westview Caravan Park	6882 1339	\$27	\$38-\$48	\$50-\$65	\$16	\$20	Extra person \$6-\$8
39	***	Poplars Tourist Park	6882 4067			\$60 (linen main bed)		\$20	Extra peron \$3.50-\$6.00

SELF-CONTAINED

AAAT	Property	Address	Phone	Single	Double	Extra Person	
40	*****	Pinecrest Place	6885 5812 0438 347 974	From \$115	From \$130		
41	****	Blizzardfield Country Retreat	6882 5909 0418 247 547		From \$130	\$30 after 4 people \$30	4 people \$220
42	****	Boora Cottage	6884 2600 0428 739 893	From \$130	From \$130		
43	****	Cattleman's Apartments	6884 5222	\$95-\$245	\$95-\$245	\$11	
44	****	Country Apartments	6885 1141	\$135-\$255	\$135-\$255	\$5-\$25	Meals to unit
45	****	Gortaderra Cottage/Unit	6882 9892	\$110-\$140	\$130-\$150	A \$20, C \$10	
46	****	Douglas House	0427 888 847	\$170	\$170		Rented as one property, up to 6 people
47	***	Manera Heights Country Living	6884 3865 0430 348 846	\$85-\$103	\$99-\$129	\$15-\$22	
48	not rated	Dubbo Budget Accommodation	6884 3049	\$40	\$50	\$10	
49	not rated	Serenity Cottage	6885 3449 0408 497 047				\$330 2A2C For 2 nights

ZOO BASED ACCOMMODATION

AAAT	Property	Address	Phone	Adult (twin)	Child 5-15 yrs	Child 1-4 yrs	
50	not rated	Roar and Snore	6881 1405	\$145	\$95		Package
51	not rated	Zoofari Lodge	6881 1488	From \$269	\$159.00	\$55	Package

BED & BREAKFASTS

	AAAT	Property	Address	Phone	Single	Double	Extra Person	
52	*****	Pericoe Retreat B&B	12R Cassandra Drive off Dunedoo Road	6887 2705 0407 896 828	\$155 Sun-Thu	\$200-\$250	\$60	
53	****	Ampallee B&B	11R Dunedoo Road	6885 5366 0418 969 650		\$150	\$20	
54	****	Cottage Rose Jardin Guest House	5 Bunninyong Road	6885 1779 0419 608 654	\$150	\$150		Self-contained
55	****	Walls Court B&B	11L Belgravia Heights Road	6887 3823 0407 226 606	\$115-\$125	\$150	\$30	
56	****	Mayfair Cottage B&B	10 Baird Street	6882 5226 0418 219 185	\$70	\$100	\$35	
57	****	Westbury Guest House	Corner Brisbane & Wingewarra Streets	6884 9445	\$110	\$140	\$25	
58	not rated	Corcoran B&B	4L Rocky Road, off Old Dubbo Road	0419 016 677	\$130	\$150	\$30	
59	not rated	GillBree Gardens B&B	2R Winbar Rd , Firgrove Estate	6884 8003	\$70	\$100	Ch 1-3 \$20; Ch 4-15 \$30	
60	not rated	Hy – Viu	3L Wansey Road off Thornwood Road	6887 2755 0438 140 644	\$100	\$135		
61	not rated	Immarna B&B	12RCoolbaggie Rd off Rawsonville Bridge Rd	6887 3131	\$100	\$100	\$20	Cottage \$120-\$150
62	not rated	Ranelagh	Bourke Street (North)	6884 4418 0408 636 111	From \$119	\$149-\$179		

CABINS

	AAAT	Property	Address	Phone	Single	Double	
63	not rated	Aussie Cabins	Sheraton Road	6884 9504	\$22.00 (group rate)	From \$55 - \$75	Linen for hire
64	not rated	The Barracks	The Falls Rd off Mitchell Hwy	6884 9980 0428 849 980	\$17.60	Minimum 15 people	Group bookings only

FARMSTAY

	AAAT	Property	Address	Phone	Single	Double	Extra Person	
65	not rated	Lochs Lodge	14R Durraween Lane	6887 2619	\$130-\$150 includes b/fast Price is for 2A2C (under 10)		A - \$25, C - \$15	Unit no cooking facilities

HOSTELS

	AAAT	Property	Address	Phone	Single	Double	Weekly	
66	not rated	Christo's Budget Accommodation	68 Buljite Street	68845311 0400 463 643	\$35	\$55	From \$140	
67	not rated	Gest Inn	79 Brisbane Street	6882 5004	From \$25	From \$40	From \$110	

PUBSTAY

	AAAT	Property	Address	Phone	Single	Double	Extra Person	Restaurant
68	**	Amaroo Hotel	83 Macquarie Street	6882 3533	\$59 B&B	\$80 B&B	\$30 B&B	Yes
69	not rated	Castlereagh Hotel	Cnr Talbragar & Brisbane Sts	6882 4877	From \$35	Double from \$70 Twin from \$60		Yes
70	not rated	Garden Hotel	Cnr Talbragar & Gipp Sts	6882 3371	\$35	\$50	Family \$70	yes

APPENDIX THREE: TRAVEL AND VISITOR INFORMATION

LOCATION

Sydney is a major Asia Pacific city. It is the capital city of New South Wales and the most densely populated state of Australia. On the south-east coast, it is bounded by the Pacific Ocean to the east, national parklands and coastline to the north and south, and the spectacular Blue Mountains to the west.

TIME ZONES

Sydney operates on Eastern Standard Time (EST), which is calculated by adding 10 hours to Greenwich Mean Time (GMT).

At 12 noon Monday in Sydney it is:

02:00 pm	Monday	Auckland
11:00 pm	Sunday	Buenos Aires
10:00 am	Monday	Hong Kong
04:00 am	Monday	Johannesburg
01:00 am	Monday	London
05:00 pm	Sunday	Los Angeles
08:00 pm	Sunday	New York
02:00 am	Monday	Paris
10:00 am	Monday	Tokyo

During Daylight Saving (from the last Sunday in October to the first Sunday in March) add 11 hours to GMT.

CUSTOMS

Generous passenger baggage concessions exist for arriving passengers, with travellers allowed to bring into Australia non commercial goods, duty and tax free. Members of the same family who are travelling together may combine their individual duty-free allowances.

- \$AUD400 worth of goods not including alcohol or tobacco (\$AUD200 for travellers under 18 years of age). For example, cameras, electronic equipment, perfume concentrate, leather goods, jewellery, watches, sporting goods, etc.;
- 1125 ml alcoholic liquor (including wine, beer or spirits) for travellers aged 18 years and over;
- tobacco: 250 cigarettes, or 250 grams of cigars or tobacco products other than cigarettes, for travellers aged 18 years and over;
- most personal items such as new clothing, footwear, articles for personal hygiene/grooming;
- personal goods owned and used for at least 12 months can also be brought into Australia without payment of duty and sales tax* (proof of date of purchase may be required); and



Commercial goods brought into Australia with the intention of being sold will be subject to the normal rates of Customs duty and Goods and Services Tax (GST) where applicable. Goods, commercial or personal, that are brought into Australia to remain temporarily, may be admitted duty and tax free, subject to certain conditions.

Carnets may be obtained for temporary duty-free entry of goods such as commercial samples, jewellery, goods for international exhibitions, equipment for sporting events, professional television and film equipment etc. Contact your International Chamber of Commerce for application details.

Goods imported temporarily must meet Australian quarantine requirements.

For more information on importing goods, contact a Customs officer or an Australian Embassy, High Commission or Consulate overseas, or refer to the Customs brochure *Customs Information for Importers* available at Customs offices in Australia or at Australian diplomatic posts overseas.

VACCINATIONS

Vaccinations are not necessary unless visitors come from a yellow fever infected country zone within six days prior to arrival. No other health certificate is needed to enter Australia.

Twenty-four hour medical clinics operate in Sydney.

MONEY MATTERS

Australia uses a decimal currency system of dollars and cents.

Exchange rates may vary slightly each day, but overall they have been stable in recent years. The current exchange rates for the Australian dollar as at September 2008 are:

AUD\$1	European Union	.57. euro
	Japan	79 yen
	Singapore	1.14 dollars
	UK	45 pence
	USA	79 cents
	Canada	85 cents

Credit cards are accepted virtually everywhere. The most commonly accepted are VISA, American Express, Bankcard, MasterCard and Diners Club. Traveller's cheques are also widely accepted.

International airports provide money-changing facilities for arriving and departing passengers. Major hotels and banks will also exchange money quickly and efficiently. There is no limit to the amount of currency that visitors may bring into the country.



GOODS AND SERVICES TAX

Australia has a Goods and Services Tax (GST). The GST applies at the rate of ten percent to most goods delivered and services performed by businesses and other trading entities. There are situations where the GST applicable could be exempt depending on a number of contributing factors. As there are continuing changes to the GST legislation, organisations planning events in Australia should speak with their meeting manager or the Australian Tax Office for further information regarding the GST.

The Tourist Refund System

The Tourist Refund System (TRS) allows international travellers to claim a refund of the GST paid on goods you buy in Australia. The refund only applies to goods you take with you as hand luggage when you leave the country. It does not apply to services or goods consumed or partly consumed in Australia. However, unlike other tourist shopping schemes, you can use the goods before leaving Australia.

The refund will be paid on goods costing \$AUD300 or more, bought from the same store, no earlier than 30 days before you leave. You may purchase several lower-priced items from the one store, either at the one time or over several occasions within the 30-day period, provided the total purchase amounts to \$AUD300 or more and the goods are covered by the one tax invoice. You may buy goods from several stores, provided each store's tax invoice totals at least \$AUD300.

If you are leaving Australia through an international airport, you may collect your refund in cash on departure (if the refund is \$AUD200 or less) or choose a non-cash option. Non-cash options include: cheque, credit to an Australian bank account or payment to a credit card. If you choose a non-cash method, Customs will aim to pay your refund in 30 days.

The Rocks, Sydney, tax free shopping scheme (using the traditional closed bag system) allows travellers with a valid departure ticket from Australia to pay the tax-free price (equating to over 9% discount) on purchases in over 40 specialty retail stores in The Rocks.

Banking hours

Bank hours are: Monday to Thursday from 9:30am to 4:00pm; and on Fridays from 9:00am to 5:00pm. Some banks are open Saturdays. Automatic teller machines (ATMs) are situated throughout the city for the convenience of 24-hour banking.



TRAVEL AUTHORITIES AND VISAS

Australia's Electronic Travel Authority (ETA) system is the world's most advanced and streamlined travel authorisation system. The ETA is an electronically-stored authority for travel to Australia for a short-term tourist or business entry. It replaces the visa label or stamp in a passport and removes the need for application forms. ETAs are issued within seconds of being requested either via the Internet or through computer links between the Australian Department of Immigration and Citizenship, travel agents, airlines and specialist service providers around the world. Over 30 countries around the world have access to the free ETA system.

ETA Countries

Europe		Asia
Andorra	Luxembourg	Brunei
Austria	Malta	Hong Kong SAR
Belgium	Monaco	Japan
Denmark	The Netherlands	Malaysia
Finland	Norway	Singapore
France	Portugal	South Korea
Germany	San Marino	Taiwan*
Greece	Spain	
Iceland	Sweden	
Ireland	Switzerland	
Italy	UK **	
Liechtenstein	Vatican City	
		North America
		Canada
		USA

* Holders of Taiwan passports can only be processed for an ETA if resident in and applying in Taiwan.

** Holders of UK passports which indicate their nationality to be British National (Overseas) can only be processed for an ETA if resident in and applying in Hong Kong.

Australia's Department of Immigration and Citizenship has a service available to assist people organising meetings with obtaining visa information and assisting with visa problems. This service is free and is called the International Event Coordinator Network⁷. Please refer to the Conference Support section of this document for further information.

⁷ Australian Department of Immigration and Citizenship: www.immi.gov.au



IMPORTANT LEGAL CONDITIONS

This document is a compilation of materials created or written by Business Events Sydney (BESydney) and materials obtained from its members and other contributors.

While BESydney has made reasonable efforts to ensure that the contents of this publication are accurate, BESydney provides this publication on the condition that and subject to your agreement that:-

1. The information contained in this publication is general and summary in nature and should not be relied upon without making further specific enquiries.
2. BESydney will not be liable for any inaccuracy, error or misdescription contained in this publication. BESydney may plead these terms as a bar or defence to any action against it and whether founded in contract, negligence or other tort or for breach of statute or founded upon any other basis.
3. BESydney is not the partner of and does not act as the agent of any of the companies, firms, individuals, statutory or government bodies or other entities or organisations ("Other Entities") which/who are referred to in this publication and Other Entities are not the agent of BESydney.
4. You will not represent yourself, your company or other organisation as the agent, partner or otherwise as having a relationship with BESydney which may give rise to joint and several liability or vicarious liability of any kind.
5. BESydney will not be vicariously liable for the acts or omissions of any Other Entities referred to in this publication whether such acts or omissions constitute a breach of any agreement, negligence or other tort, breach of any statutory duty or give rise to any other legal liability whatsoever.
6. If you determine to engage the services or acquire the products of any Other Entities, you will make and rely upon your own enquiries and satisfy yourself as to the fitness of those products and services and will not do so in reliance upon this publication.
7. As a compilation, this publication is copyright of BESydney. Individual contributions, including text, graphics and photographs, may be the copyright of BESydney, BESydney members or other contributors. You agree that you will not copy this publication or any part of it, adapt, broadcast, transmit or part with possession or otherwise deal with it in any manner without the prior written consent of BESydney.
8. You will use this publication solely for the purpose of assessing Sydney's bid for your event.
9. BESydney may use the information supplied by the Association/Organisation to assist it to collect service fees payable to it by members to which business has been referred, in respect of or in connection with the Event.

